

C
PUMPS



DPA-16

THE **DPA-16 (1.6 L) AND DPA-40 (4.0 L)** AIR DRIVEN HYDRAULIC PUMPS ARE A FIELD PROVEN ECONOMICAL CHOICE OF POWER SOURCE FOR RUNNING SMALL TO MEDIUM HYDRAULIC CYLINDERS AND TOOLS WHEN COMPRESSED AIR IS AVAILABLE.

All models have a maximum working pressure of 700 bar and metal oil reservoirs for strength and durability. A convenient carry handle is built into the treadle and all pumps are supplied pre-filled with oil and ready for immediate use.



DPA-40

ALL METAL CONSTRUCTION

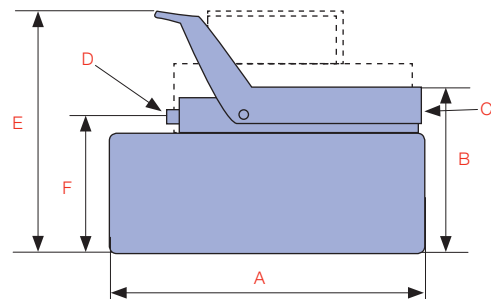
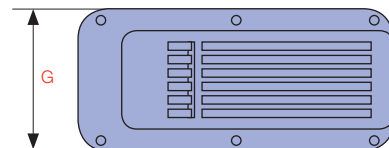
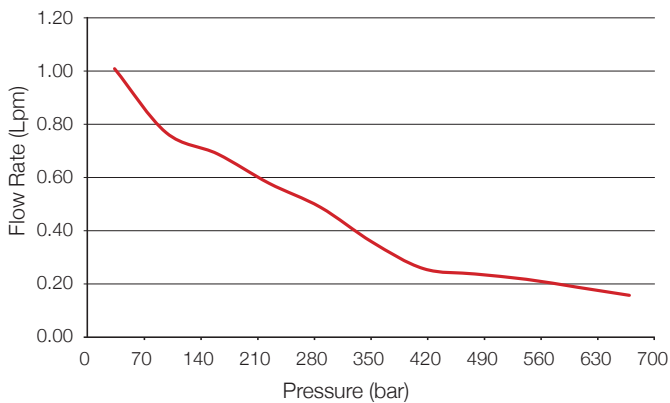
no plastic internal components

FULLY SERVICEABLE AIR MOTOR

for economical repair

DPA-16 & DPA-40

PRESSURE VS FLOW RATE (BOTH MODELS)



Model Number	Used with Cylinder	Usable Oil Capacity (cc)	Pressure Rating (bar)	Output Flow Rate (cm ³ /min)		Air Pressure Range (bar)	Dimension (mm)							Weight (kg)
				No load	Load		A	B	C	D	E	F	G	
DPA-16	S/A	1,600	700	1,000	150	3-8	254	150	1/4"-NPT	3/8"-NPTF	200	130	127	6.6
DPA-40	S/A	3,800	700	1,000	150	3-8	332	142	1/4"-NPT	3/8"-NPTF	210	130	191	10.4