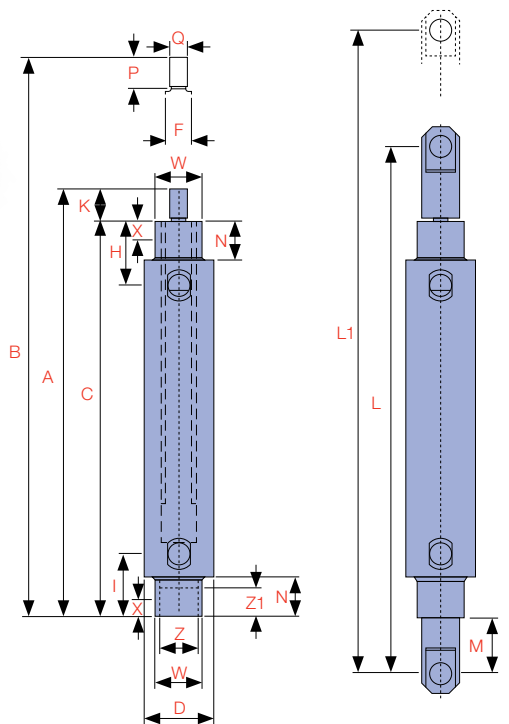


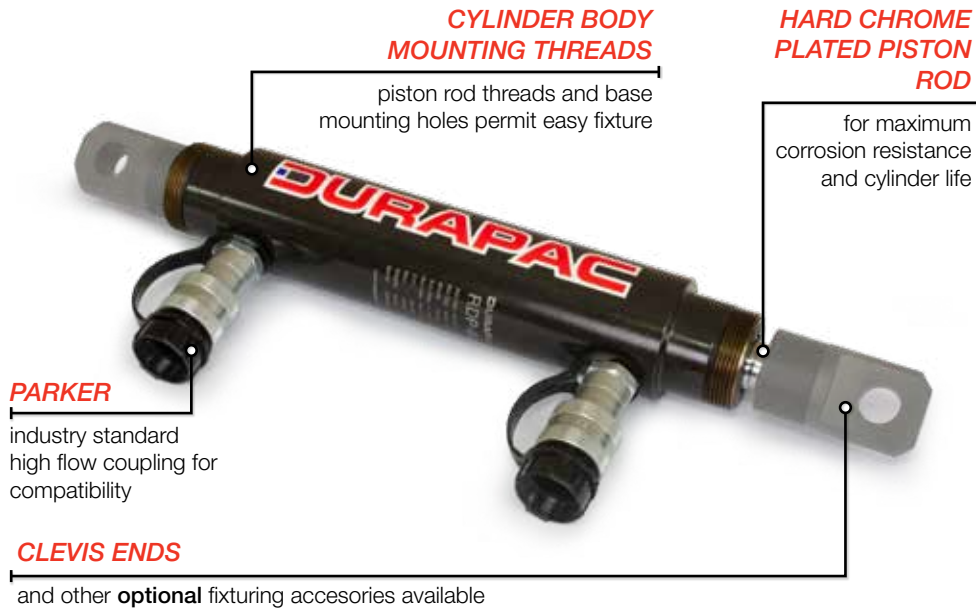
THE **RDP-SERIES** DOUBLE ACTING OPERATION CYLINDER DEVELOPS FORCE IN BOTH DIRECTIONS AND PROVIDES MAXIMUM FIXTURING VERSATILITY. THE PERFECT CHOICE FOR PRODUCTION APPLICATIONS.

All RDP-Series cylinders feature a hard chrome piston rod for maximum resistance to corrosion and wear. All models include collar thread, piston rod threads and base mounting holes for easy fixturing. Optional fixturing accessories including clevis ends are available.



Model Number	Cylinder Capacity			Stroke (mm)	Cylinder Effective Area		Oil Capacity		A Collapsed Height (mm)	B Extended Height (mm)	C Body Length (mm)	D Outside Diameter (mm)	E Cylinder Bore Diameter (mm)	F Piston Rod Diameter (mm)
	ton*	Advance kN	Retract kN		Advance (cm <sup>2</sup> )	Retract (cm <sup>2</sup> )	Advance (cm <sup>3</sup> )	Retract (cm <sup>3</sup> )						
RDP-41	4	35	16	29	5.1	2.2	14	6	186	214	162	50.1	25.4	19.0
RDP-43		35	16	80	5.1	2.2	40	17	237	316	213	50.1	25.4	19.0
RDP-46		35	16	156	5.1	2.2	79	34	313	468	289	50.1	25.4	19.0
RDP-91	9	80	44	29	11.4	6.3	32	18	223	251	198	63.5	38.1	25.4
RDP-93		80	44	80	11.4	6.3	90	50	274	353	249	63.5	38.1	25.4
RDP-96		80	44	156	11.4	6.3	177	98	350	505	325	63.5	38.1	25.4
RDP-910		80	44	257	11.4	6.3	293	162	452	709	427	63.5	38.1	25.4
RDP-166	16	142	77	159	20.3	10.6	323	169	389	548	359	76.2	50.8	35.0
RDP-1610		142	77	260	20.3	10.6	528	276	491	751	461	76.2	50.8	35.0
RDP-256	25	222	98	159	31.7	13.7	504	218	424	583	397	92.2	63.5	47.8
RDP-2510		222	98	260	31.7	13.7	824	356	526	786	499	92.2	63.5	47.8

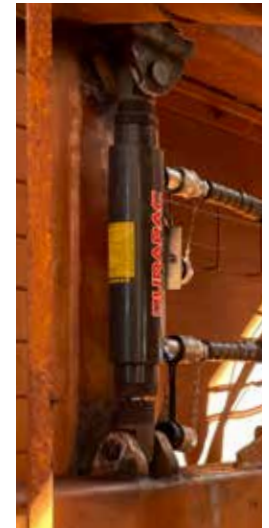
\*Nominal Cylinder Capacity in ton - see kN values for actual capacity



**CAPACITY**  
**4 - 25 ton**

**STROKE**  
**29 - 260 mm**

**MAXIMUM OPERATING PRESSURE**  
**700 bar**



H Base to Advance Port (mm)	I Top to Return Port (mm)	K Piston Rod Protrusion (mm)	L Clevis Eye Mounting Dim. (mm)	L1 Clevis Eye Mounting Dim. (mm)	M Clevis Eye Mounting Dim. (mm)	N Neck Length (mm)	P Piston Rod Thread Length (mm)	Q Piston Rod Extension Thread	W Collar Thread	X Collar Thread Length (mm)	Z Internal Base Thread	Z1 Internal Base Thread Length (mm)	Weight (kg)
48	48	24	257	286	41.0	29	19.1	1/2"-20	1-3/8"-12	11	1-1/8"-20	9	2.0
48	48	24	307	387	41.0	29	19.1	1/2"-20	1-3/8"-12	11	1-1/8"-20	9	2.6
48	48	24	384	540	41.0	29	19.1	1/2"-20	1-3/8"-12	11	1-1/8"-20	9	3.6
58	58	25	295	324	38.0	38	19.1	3/4"-16	2"-12	14	1-11/16"-18	14	3.0
58	58	25	347	426	38.0	38	19.1	3/4"-16	2"-12	14	1-11/16"-18	14	4.2
58	58	25	423	579	38.0	38	19.1	3/4"-16	2"-12	14	1-11/16"-18	14	5.6
58	58	25	525	782	38.0	38	19.1	3/4"-16	2"-12	14	1-11/16"-18	14	7.3
74	74	30	495	654	53.8	54	25.4	1-1/8"-12	2-5/8"-16	22	2-3/16"-16	24	10.2
74	74	30	593	853	52.0	54	25.4	1-1/8"-12	2-5/8"-16	22	2-3/16"-16	24	14.5
89	89	27	530	689	53.0	70	25.4	1-1/2"-12	3-1/4"-16	29	2-3/4"-16	26	16.0
89	89	27	631	892	53.0	70	25.4	1-1/2"-12	3-1/4"-16	29	2-3/4"-16	26	20.3

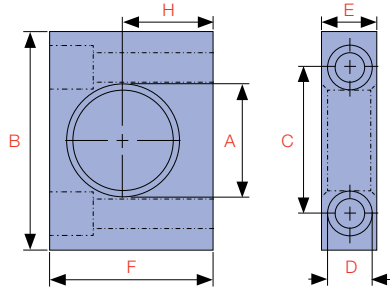
\*\*See RDP-Series table for Clevis Eye Mounting Dimensions (L, L1 & M)

## DOUBLE ACTING PRODUCTION CYLINDERS

### OPTIONAL ACCESSORIES

C

CYLINDERS



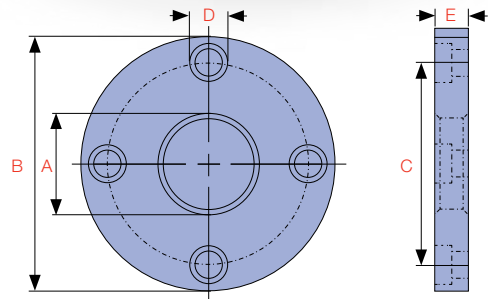
### FOOT MOUNTING FOR USE WITH RETAINING NUT

Model No.	Cylinder Capacity		Dimensions (mm)						
	ton*	kN	A	B	C	D	E	F	H
RAD-141	4	35	35.1	76.2	58.0	10.5	20.0	57.0	31.8
RAD-171	9	80	50.8	101.6	78.0	13.5	25.0	82.5	44.5
RAD-181	16	142	66.8	127.0	95.2	20.0	35.0	100.0	52.4
RAD-191	25	222	82.6	158.8	117.5	26.5	45.0	125.0	63.5



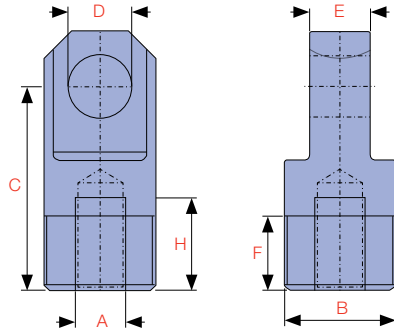
### FLANGE MOUNTING FOR USE WITH RETAINING NUT

Model No.	Cylinder Capacity		Dimensions (mm)				
	ton*	kN	A	B	C	D	E
RAD-142	4	35	35.1	98.6	78.5	10.4	19.0
RAD-172	9	80	50.8	120.7	98.6	10.4	25.4
RAD-182	16	142	66.8	143.0	115.9	13.5	35.0
RAD-192	25	222	82.6	165.1	135.6	16.8	44.5



Model Number	Cylinder Capacity			Stroke (mm)	Cylinder Effective Area		Oil Capacity		A Collapsed Height (mm)	B Extended Height (mm)	C Body Length (mm)	D Outside Diameter (mm)	E Cylinder Bore Diameter (mm)	F Piston Rod Diameter (mm)
	ton*	Advance kN	Retract kN		Advance (cm <sup>2</sup> )	Retract (cm <sup>2</sup> )	Advance (cm <sup>3</sup> )	Retract (cm <sup>3</sup> )						
RDP-41	4	35	16	29	5.1	2.2	14	6	186	214	162	50.1	25.4	19.0
RDP-43		35	16	80	5.1	2.2	40	17	237	316	213	50.1	25.4	19.0
RDP-46		35	16	156	5.1	2.2	79	34	313	468	289	50.1	25.4	19.0
RDP-91	9	80	44	29	11.4	6.3	32	18	223	251	198	63.5	38.1	25.4
RDP-93		80	44	80	11.4	6.3	90	50	274	353	249	63.5	38.1	25.4
RDP-96		80	44	156	11.4	6.3	177	98	350	505	325	63.5	38.1	25.4
RDP-910		80	44	257	11.4	6.3	293	162	452	709	427	63.5	38.1	25.4
RDP-166	16	142	77	159	20.3	10.6	323	169	389	548	359	76.2	50.8	35.0
RDP-1610		142	77	260	20.3	10.6	528	276	491	751	461	76.2	50.8	35.0
RDP-256	25	222	98	159	31.7	13.7	504	218	424	583	397	92.2	63.5	47.8
RDP-2510		222	98	260	31.7	13.7	824	356	526	786	499	92.2	63.5	47.8

\*Nominal Cylinder Capacity in ton - see kN values for actual capacity



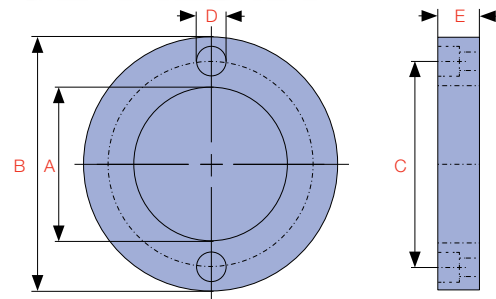
### CLEVIS EYE

Model No.	Cylinder Capacity		Dimensions (mm)						
	ton*	kN	A	B	C	D	E	F	H
RAD-150**	4	35	1/2"-20	1-1/8"-20	52.4	16.0	15.9	19.1	23.8
RAD-151**	9	80	3/4"-16	1-11/16"-18	57.1	20.0	25.4	25.4	23.8
RAD-152**	16	142	1-1/8"-12	2-3/16"-16	77.8	25.0	31.8	25.4	30.2
RAD-153**	25	222	1-1/2"-12	2-3/4"-16	77.8	32.0	38.2	25.4	27.0



### RETAINING NUT

Model No.	Cylinder Capacity		Dimensions (mm)				
	ton*	kN	A	B	C	D	E
RAD-143	4	35	1-3/8"-12	57.0	49.5	6.3	9.5
RAD-173	9	80	2"-12	75.0	65.5	6.7	12.7
RAD-183	16	142	2-5/8"-16	92.0	81.0	6.7	19.0
RAD-193	25	222	3-1/4"-16	108.0	96.5	6.7	25.4



H	I	K	L	L1	M	N	P	Q	W	X	Z	Z1	Weight (kg)
Base to Advance Port (mm)	Top to Return Port (mm)	Piston Rod Protrusion (mm)	Clevis Eye Mounting Dim. (mm)	Clevis Eye Mounting Dim. (mm)	Clevis Eye Mounting Dim. (mm)	Neck Length (mm)	Piston Rod Thread Length (mm)	Piston Rod Extension Thread	Collar Thread	Collar Thread Length (mm)	Internal Base Thread	Internal Base Thread Length (mm)	
48	48	24	257	286	41.0	29	19.1	1/2"-20	1-3/8"-12	11	1-1/8"-20	9	2.0
48	48	24	307	387	41.0	29	19.1	1/2"-20	1-3/8"-12	11	1-1/8"-20	9	2.6
48	48	24	384	540	41.0	29	19.1	1/2"-20	1-3/8"-12	11	1-1/8"-20	9	3.6
58	58	25	295	324	38.0	38	19.1	3/4"-16	2"-12	14	1-11/16"-18	14	3.0
58	58	25	347	426	38.0	38	19.1	3/4"-16	2"-12	14	1-11/16"-18	14	4.2
58	58	25	423	579	38.0	38	19.1	3/4"-16	2"-12	14	1-11/16"-18	14	5.6
58	58	25	525	782	38.0	38	19.1	3/4"-16	2"-12	14	1-11/16"-18	14	7.3
74	74	30	495	654	53.8	54	25.4	1-1/8"-12	2-5/8"-16	22	2-3/16"-16	24	10.2
74	74	30	593	853	52.0	54	25.4	1-1/8"-12	2-5/8"-16	22	2-3/16"-16	24	14.5
89	89	27	530	689	53.0	70	25.4	1-1/2"-12	3-1/4"-16	29	2-3/4"-16	26	16.0
89	89	27	631	892	53.0	70	25.4	1-1/2"-12	3-1/4"-16	29	2-3/4"-16	26	20.3

\*Nominal Cylinder Capacity in ton - see kN values for actual capacity

\*\*See RDP-Series table for Clevis Eye Mounting Dimensions (L, L1 & M)