

HIGH TONNAGE LIFTING JACK & STAND

## + POWERDRIVE



THE **SDN** SERIES JACK IS AN ERGONOMICALLY DESIGNED PORTABLE JACKING SYSTEM THAT IS EASILY WHEELED AROUND A JOB SITE.

This unit is designed for lifting of heavy mining vehicles. It can be used on any hard surface (maintenance bays & workshops) and is easily transported by a ute to site. The wheeled chassis has an ergonomically designed handle system which is adjustable, making it easy to move around by one person. The chassis frame is steel (not cast) for maximum durability and longevity. For safety, a 5 mtr remote control pendant is supplied to keep the operator out of the way of any possible hazards. Optional u-rings, tilt saddles and extensions are available.

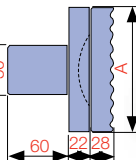
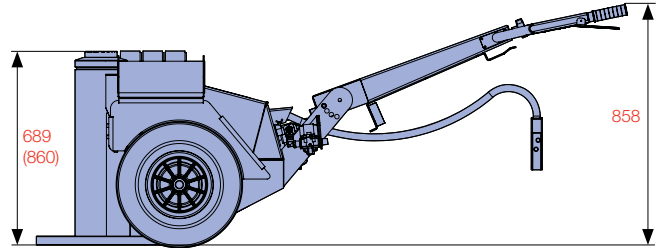
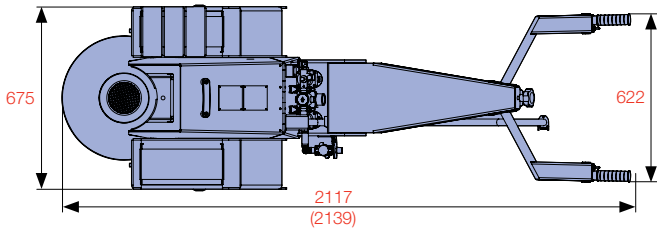


Model Number	Jack Capacity			Cylinder Effective Area (cm <sup>2</sup> )	Collapsed Height (mm)**	Stroke (mm)	Powerdrive Option (Y/N)	Oil Tank Capacity (L)	Weight (kg)
	Metric (tonne)	US (ton)*	(kN)						
SDN-10068	100	110	980	143	680	400	N	24	346
SDN-10068-PD	100	110	980	143	680	400	Y	24	346
SDN-10086	100	110	980	143	860	571	N	24	381
SDN-10086-PD	100	110	980	143	860	571	Y	24	381
SDN-15068	135	150	1,324	254	685	400	N	24	434
SDN-15068-PD	135	150	1,324	254	685	400	Y	24	434
SDN-15096	135	150	1,324	254	970	685	N	24	476
SDN-15096-PD	135	150	1,324	254	970	685	Y	24	476
SDN-20068	181	200	1,781	254	685	400	N	24	434
SDN-20068-PD	181	200	1,781	254	685	400	Y	24	434
SDN-20096	181	200	1,781	254	970	685	N	24	476
SDN-20096-PD	181	200	1,781	254	970	685	Y	24	476

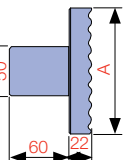
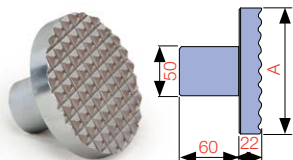
\* Nominal Cylinder Capacity in ton - see kN values for actual capacity

\*\* Includes load cap height of 22 mm

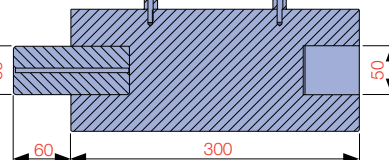
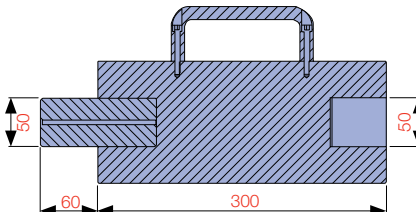
Model No.	A Collapsed Height (mm)	B Base Plate Diameter (mm)
SDN-10068/PD	680	505
SDN-10086/PD	860	505
SDN-150/20068/PD	685	505
SDN-150/20096/PD	970	525



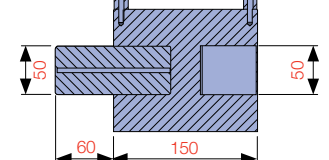
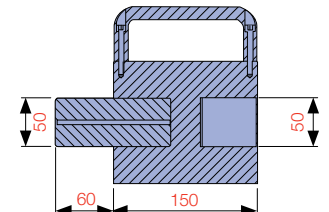
**SDS-150/200N**



**SDLC-150**



**SDE150-300**



**SDE150-150**

Model Number	Capacity (tons)	Description	Height (mm)	Diameter (mm) 'A'	Total Length (mm)	Spigot Depth (mm)	Spigot Diameter (mm)	Weight (kg)
SDE100-150	70/100	150 mm Extension **	150	112	210	60	50	7.0
SDE100-300	70/100	300 mm Extension **	300	112	360	60	50	13.0
SDE150-150	150	150 mm Extension **	150	126	210	60	50	7.0
SDE150-300	150	300 mm Extension **	300	126	360	60	50	13.0
SDE200-150	200	150mm Extension **	150	140	210	60	50	8.0
SDE200-300	200	300 mm Extension **	300	140	360	60	50	15.0
SDLC-100	70/100	Serrated Steel Load Cap *	22	112	82	60	50	3.0
SDLC-150	150	Serrated Steel Load Cap *	22	126	82	60	50	3.0
SDLC-200	200	Serrated Steel Load Cap*	22	126	82	60	50	4.0
SDS-100N	70/100	Serrated Tilt Saddle **	50	112	110	60	50	5.0
SDS-150/200N	150/200	Serrated Tilt Saddle **	50	126	110	60	50	6.0
SDNU-15	100	15mm U-Ring Saddle **	15	-	-	-	-	0.6
SDNU-25	100	25mm U-Ring Saddle **	25	-	-	-	-	0.9
SDNU-75	100	75mm U-Ring Saddle **	75	-	-	-	-	2.8
SDNU-100	100	100mm U-Ring Saddle **	100	-	-	-	-	3.6
SDNU-250	100	250mm U-Ring Saddle **	250	-	-	-	-	9.0
SDNU-200-15	150/200	15mm U-Ring Saddle **	15	CONSULT DURAPAC				
SDNU-200-25	150/200	25mm U-Ring Saddle **	25	CONSULT DURAPAC				
SDNU-200-75	150/200	75mm U-Ring Saddle **	75	CONSULT DURAPAC				
SDNU-200-100	150/200	100mm U-Ring Saddle **	100	CONSULT DURAPAC				
SDNU-200-250	150/200	250mm U-Ring Saddle **	250	CONSULT DURAPAC				

\* Supplied as standard

\*\* Optional item

### OIL RETURN LINE FILTER

included as standard

### HYDRAULIC SYSTEM

is powered by a Gast® 3.9 kW air motor

### LIFTING POINTS

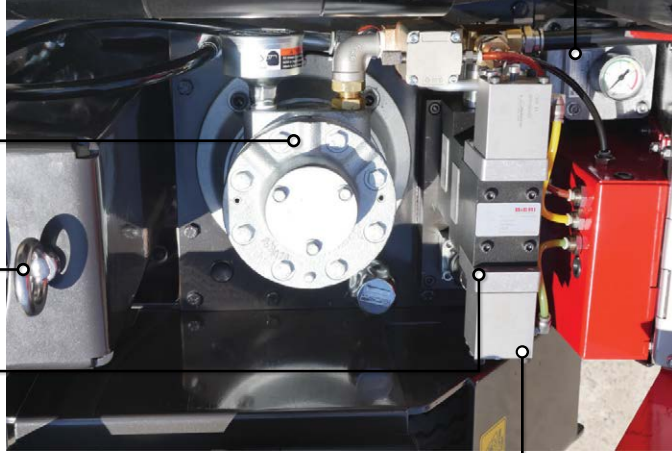
for central lifting

### LOAD LOWERING

counterbalance valve for smooth controlled lowering of load

### PNEUMATIC CONTROL VALVES

for precise lifting and lowering



CAPACITY

**100 - 181 tonne**  
**(110 - 200 US ton)**

STROKE RANGE

**400 - 685 mm**

### TILT ADJUSTABLE HANDLE

for ease of manoeuvring and compact storage

