

A

SPECIALTY LIFTING SYSTEMS



THE **EXTRA COMPACT SAFE D LOCK (SDL)** JACK IS A LIFTING JACK AND RATED VEHICLE JACK STAND FOR HEAVY MINING VEHICLES WITH LOW HEIGHT, NARROW WIDTH JACKING POINTS.

These jacks were designed to suit a Cat® Dozer or similar low height, narrow width jacking point vehicle. With all the safety features of a standard SDL but in a more compact size.



Australian designed and built to meet AS/NZS 2693:2007 standard for vehicle jacks, it also meets AS/NZS 2538:2004 standard for vehicle support stands.

SDL-10055

Model Number	Jack Capacity			Cylinder Effective Area (cm ²)	A Collapsed Height (mm)**	B Base Plate Diameter (mm)	C Folded Length (mm)	D Jack Length (mm)	Stroke (mm)	Maximum Lift Height (mm)***	Oil Tank Capacity (L)	Weight (kg)
	Metric (tonne)	US (ton)*	(kN)									
SDL-10055	100	110	980	143	550	505	1,147	2,027	274	1,250	24	320

* Nominal Cylinder Capacity in ton - see kN values for actual capacity. ** Includes load cap height of 22 mm
 *** Maximum lift height for AS/NZS 2538:2004 Vehicle Support Stand Rating

TILT ADJUSTABLE HANDLE

for ease of manoeuvring and compact storage

COLLAPSED HEIGHT

550 mm

SERRATED STEEL LOAD CAP

included as standard

HIGH STRENGTH STEEL BASE PLATE

resists deformation

LIFTING EYES

allow slinging of the jack

ALUMINIUM REMOTE PENDANT

with mounted lock and unlock indicators & 5 M hose for added safety

NARROW WIDTH

620 mm

TYRES WITH ALLOY RIMS

heavy duty, polyurethane filled, puncture-proof, large rolling diameter (450 mm)



CAPACITY

**100 tonne
(110 US ton)**

STROKE

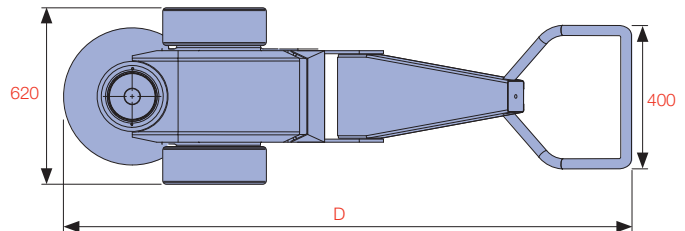
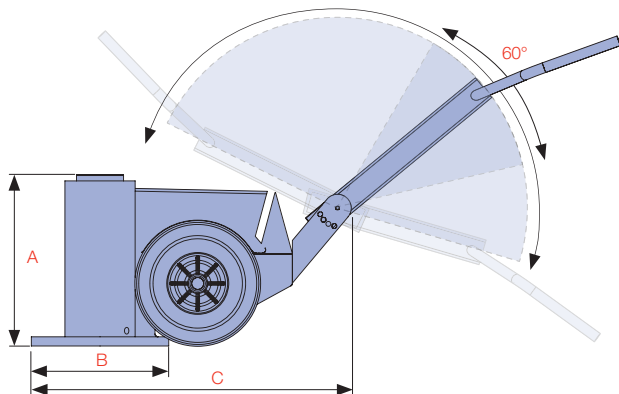
274 mm

A

SPECIALTY LIFTING SYSTEMS



See Page 16 for SD-Accessories



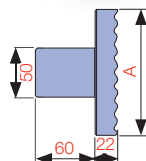
A

SPECIALTY LIFTING SYSTEMS

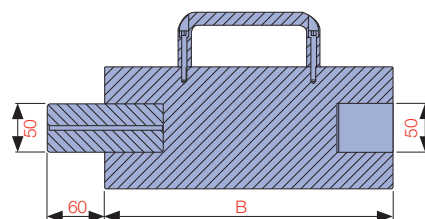


SDL shown with Custom Load Cap

THE SD-ACCESSORIES ARE DESIGNED TO SUIT THE COMPACT **SAFE D LOCK** JACK AND IT'S EXTENDED FAMILY OF JACKS. THIS INCLUDES THE **POWERDRIVE**, EXTRA COMPACT, TALLEST, SLIMLINE & SDN-SERIES JACKS & DJS-SERIES JACK STANDS.



SDLC LOAD CAP



EXTENSION 100 - 500 mm

Model Number	Capacity (ton)	Description	A Diameter (mm)	B Height (mm)	Spigot Depth (mm)	Spigot Diameter (mm)	Weight (kg)	Suits Model(s)
SDE100-100	70/100	100 mm Extension	126	100	60	50	7	SDL/SDN/DJS 70 & 100 ton
SDE100-150	70/100	150 mm Extension	126	150	60	50	7	
SDE100-200	70/100	200 mm Extension	126	200	60	50	7	
SDE100-300	70/100	300 mm Extension	126	300	60	50	13	
SDE100-400	70/100	400 mm Extension	126	400	60	50	13	
SDLC-100	70/100	Serrated Steel Load Cap*	112	22	60	50	3	
SDS-100N	70/100	Serrated Tilt Saddle	108	50	60	50	5	
SDE150-150	150	150 mm Extension	126	150	60	50	7	SDL/SDN/DJS 150 ton
SDE150-200	150	200 mm Extension	126	200	60	50	7	
SDE150-250	150	250 mm Extension	126	250	60	50	7	
SDE150-300	150	300 mm Extension	126	300	60	50	13	
SDE150-350	150	350 mm Extension	126	350	60	50	13	
SDLC-150	150	Serrated Steel Load Cap*	126	22	60	50	3	
SDS-150/200N	150/200	Serrated Tilt Saddle	126	59	60	50	5	SDL/SDN/DJS 150 & 200 ton
SDE200-100	200	100 mm Extension	141	100	60	50	8	SDL/SDN/DJS 200 ton
SDE200-150	200	150 mm Extension	141	150	60	50	8	
SDE200-200	200	200 mm Extension	141	200	60	50	15	
SDE200-300	200	300 mm Extension	141	300	60	50	15	
SDE200-400	200	400 mm Extension	141	400	60	50	15	
SDE200-500	200	500 mm Extension	141	500	60	50	15	
SDLC-200	200	Serrated Steel Load Cap*	126	22	60	50	4	

* Supplied as standard



A
SPECIALTY LIFTING SYSTEMS



WARNING...

No more than one extension to be used.



Model Number	Capacity (ton)	Description	Height (mm)	Weight (kg)	Suits Same Capacity Model(s)
SDNU-100-15	100	15 mm U-ring Saddle	15	0.6	SDN 100 Ton
SDNU-100-25	100	25 mm U-ring Saddle	25	0.9	
SDNU-100-75	100	75 mm U-ring Saddle	75	2.8	
SDNU-100-100	100	100 mm U-ring Saddle	100	3.6	
SDNU-100-250	100	250 mm U-ring Saddle	250	9.0	
SDNU-200-15	150/200	15 mm U-ring Saddle	15	CONTACT DURAPAC	SDN 150 Ton
SDNU-200-25	150/200	25 mm U-ring Saddle	25		
SDNU-200-75	150/200	75 mm U-ring Saddle	75		
SDNU-200-100	150/200	100 mm U-ring Saddle	100		
SDNU-200-250	150/200	250 mm U-ring Saddle	250		