

A

SPECIALTY LIFTING SYSTEMS



THE **EXTRA COMPACT SAFE D LOCK (SDL)** JACK IS A LIFTING JACK AND RATED VEHICLE JACK STAND FOR HEAVY MINING VEHICLES WITH LOW HEIGHT, NARROW WIDTH JACKING POINTS.

These jacks were designed to suit a Cat® Dozer or similar low height, narrow width jacking point vehicle. With all the safety features of a standard SDL but in a more compact size.



Australian designed and built to meet AS/NZS 2693:2007 standard for vehicle jacks, it also meets AS/NZS 2538:2004 standard for vehicle support stands

**SDL-10055**

Model Number	Jack Capacity			Cylinder Effective Area (cm <sup>2</sup> )	A Collapsed Height (mm)**	B Base Plate Diameter (mm)	C Folded Length (mm)	D Jack Length (mm)	Stroke (mm)	Maximum Lift Height (mm)***	Oil Tank Capacity (L)	Weight (kg)
	Metric (tonne)	US (ton)*	(kN)									
SDL-10055	100	110	980	143	550	505	1,147	2,027	274	1,250	24	320

\* Nominal Cylinder Capacity in ton - see kN values for actual capacity. \*\* Includes load cap height of 22 mm

\*\*\* Maximum lift height for AS/NZS 2538:2004 Vehicle Support Stand Rating

**TILT ADJUSTABLE HANDLE**

for ease of manoeuvring and compact storage

**COLLAPSED HEIGHT**

550 mm

**SERRATED STEEL LOAD CAP**

included as standard

**HIGH STRENGTH STEEL BASE PLATE**

resists deformation

**LIFTING EYES**

allow slinging of the jack

**ALUMINIUM REMOTE PENDANT**

with mounted lock and unlock indicators & 5 M hose for added safety

**NARROW WIDTH**

620 mm

**TYRES WITH ALLOY RIMS**

heavy duty, polyurethane filled, puncture-proof, large rolling diameter (450 mm)



CAPACITY

**100 tonne  
(110 US ton)**

STROKE

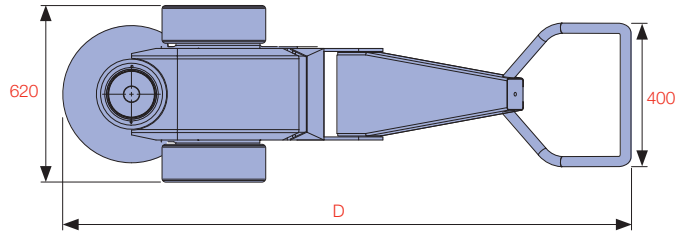
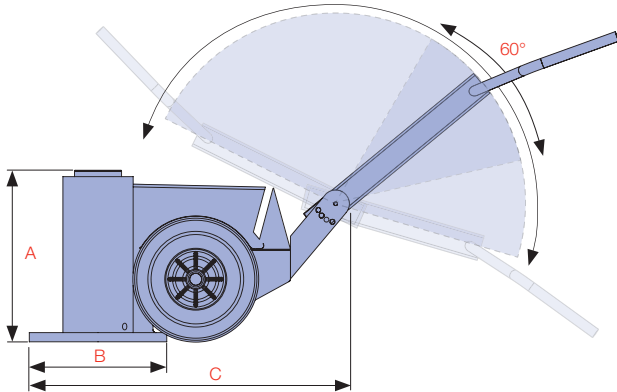
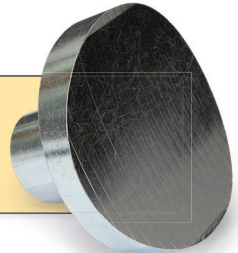
**274 mm**



See Page 16 for SD-Accessories



Radius saddles available - consult Durapac



**A**  
SPECIALTY LIFTING SYSTEMS



## SD-ACCESSORIES

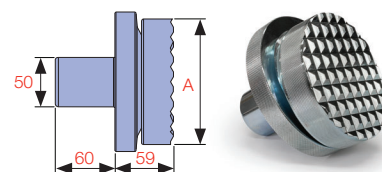
A

SPECIALTY LIFTING SYSTEMS

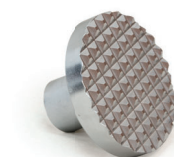


SDL WITH CUSTOM LOAD CAP

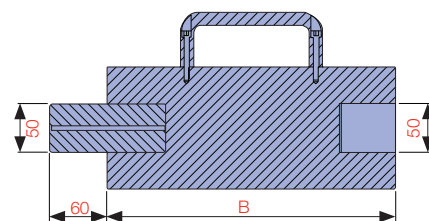
THE SD-ACCESSORIES ARE DESIGNED TO SUIT THE COMPACT **SAFE D LOCK** JACK AND IT'S EXTENDED FAMILY OF JACKS. THIS INCLUDES THE **POWERDRIVE**, EXTRA COMPACT, TALLEST, SLIMLINE & SDN-SERIES JACKS & DJS-SERIES JACK STANDS.



SDS-150/200N



SDLC LOAD CAP



EXTENSION 100 - 500 mm

Model Number	Capacity (ton)	Description	A Diameter (mm)	B Height (mm)	Spigot Depth (mm)	Spigot Diameter (mm)	Weight (kg)	Suits Model(s)
SDE100-100	70/100	100 mm Extension	126	100	60	50	7	SDL/SDN 70 & 100 ton
SDE100-150	70/100	150 mm Extension	126	150	60	50	7	
SDE100-200	70/100	200 mm Extension	126	200	60	50	7	
SDE100-300	70/100	300 mm Extension	126	300	60	50	13	
SDE100-400	70/100	400 mm Extension	126	400	60	50	13	
SDLC-100	70/100	Serrated Steel Load Cap*	112	22	60	50	3	
SDS-100N	70/100	Serrated Tilt Saddle	108	50	60	50	5	SDL/SDN/DJS 150 ton
SDE150-150	150	150 mm Extension	126	150	60	50	7	
SDE150-200	150	200 mm Extension	126	200	60	50	7	
SDE150-250	150	250 mm Extension	126	250	60	50	7	
SDE150-300	150	300 mm Extension	126	300	60	50	13	
SDE150-350	150	350 mm Extension	126	350	60	50	13	
SDLC-150	150	Serrated Steel Load Cap*	126	22	60	50	3	SDL/SDN/DJS 150 & 200 ton
SDS-150/200N	150/200	Serrated Tilt Saddle	126	59	60	50	5	
SDE200-100	200	100 mm Extension	141	100	60	50	8	SDL/SDN/DJS 200 ton
SDE200-150	200	150 mm Extension	141	150	60	50	8	
SDE200-200	200	200 mm Extension	141	200	60	50	15	
SDE200-300	200	300 mm Extension	141	300	60	50	15	
SDE200-400	200	400 mm Extension	141	400	60	50	15	
SDE200-500	200	500 mm Extension	141	500	60	50	15	
SDLC-200	200	Serrated Steel Load Cap*	126	22	60	50	4	

\* Supplied as standard

Custom load caps are available - consult Durapac



**WARNING...**  
Do not stack extensions

**SERRATED STEEL LOAD CAP**

included as standard



**CARRY HANDLE INCLUDED**

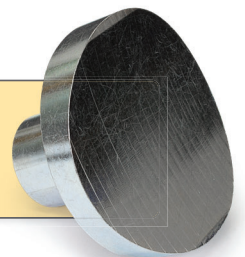
made from high strength aluminium

**U-RINGS**

for mechanical load support



Radius saddles available - consult Durapac



Model Number	Capacity (ton)	Description	Height (mm)	Weight (kg)	Suits Model(s)
SDNU-100-15	100	15 mm U-ring Saddle	15	0.6	SDN 100 ton
SDNU-100-25	100	25 mm U-ring Saddle	25	0.9	
SDNU-100-75	100	75 mm U-ring Saddle	75	2.8	
SDNU-100-100	100	100 mm U-ring Saddle	100	3.6	
SDNU-100-250	100	250 mm U-ring Saddle	250	9.0	
SDNU-200-15	150/200	15 mm U-ring Saddle	15	CONTACT DURAPAC	SDN 150 ton
SDNU-200-25	150/200	25 mm U-ring Saddle	25		
SDNU-200-75	150/200	75 mm U-ring Saddle	75		
SDNU-200-100	150/200	100 mm U-ring Saddle	100		
SDNU-200-250	150/200	250 mm U-ring Saddle	250		