

SAFE D LOCK
+ **POWERDRIVE**

THE **TALLEST SAFE D LOCK (SDL) JACK + POWERDRIVE** SAFELY ACHIEVES EXTENDED LIFTING HEIGHTS AND IS A RATED VEHICLE JACK STAND FOR HEAVY MINING VEHICLES.

These jacks have the tallest rated lockable height in our range due to the larger base plate and a strengthened gusset supported cylinder. Even when fully extended, this jack is compliant with Australian Standards for Vehicle Jacks & Support. The POWERDRIVE safely & easily moves the jack to the perfect position.



SDL-20096-PD-620



Australian designed and built to meet AS/NZS 2693:2007 standard for vehicle jacks, it also meets AS/NZS 2538:2004 standard for vehicle support stands

Model Number	Jack Capacity			Cylinder Effective Area (cm ²)	A Collapsed Height (mm)**	B Base Plate Diameter (mm)	Stroke (mm)	Max. Lift Height (mm)***	Oil Tank Capacity (L)	Weight (kg)
	Metric (tonne)	US (ton)*	(kN)							
SDL-20096-PD-620	181	200	1,781	254	960	620	685	2,100	24	590

* Nominal Cylinder Capacity in ton - see kN values for actual capacity. ** Includes load cap height of 22 mm
*** Maximum lift height for AS/NZS 2538:2004 Vehicle Support Stand Rating

EXTENDED HEIGHT

2,100 mm

TILT ADJUSTABLE HANDLE

for ease of manoeuvring and compact storage

INDEPENDENT DEADMAN SWITCHES

for easy manoeuvring and safety

THREE POSITION TOGGLE

F (Forward) N (Neutral) R (Reverse)

LARGER BASE PLATE

increases stability

SERRATED STEEL LOAD CAP

included as standard. Custom load caps and tilt saddles are available

ALUMINIUM REMOTE PENDANT

with mounted lock and unlock indicators & 5 M hose for added safety

LOCKABLE ISOLATION VALVE

relieves downstream air for extra safety and security

GUSSET SUPPORTED CYLINDER

for added strength to allow extended lifting height

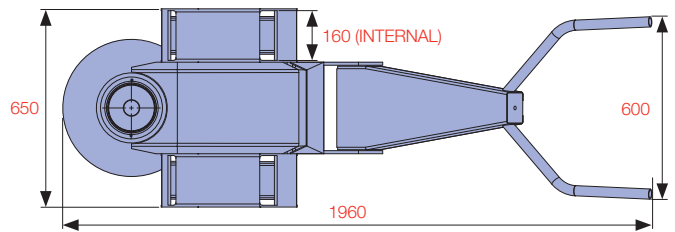
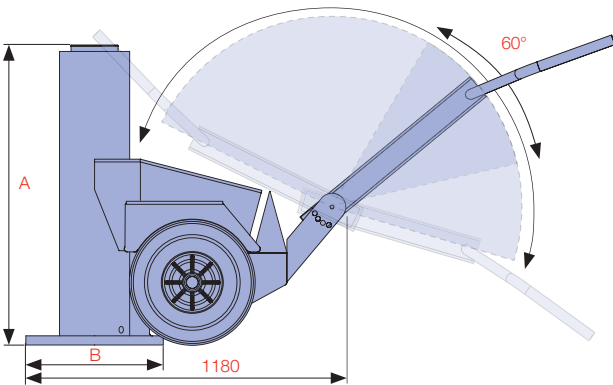


CAPACITY

**181 tonne
(200 US ton)**

STROKE

685 mm



SDE200-400 & SDE200-500
are the perfect accessory for
tall applications

See Page 16 for SD-Accessories



SDE-200-500



SDE-200-400

SD-ACCESSORIES

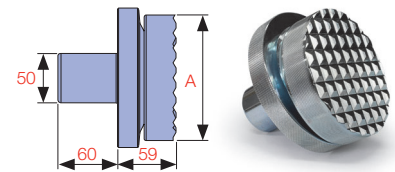
A

SPECIALTY LIFTING SYSTEMS

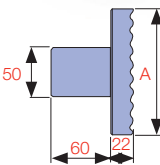
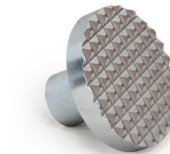


SDL WITH CUSTOM LOAD CAP

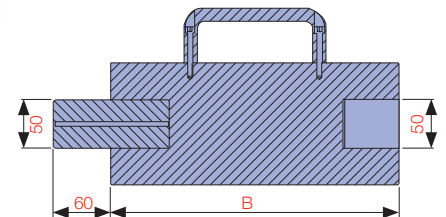
THE SD-ACCESSORIES ARE DESIGNED TO SUIT THE COMPACT **SAFE D LOCK** JACK AND IT'S EXTENDED FAMILY OF JACKS. THIS INCLUDES THE **POWERDRIVE**, EXTRA COMPACT, TALLEST, SLIMLINE & SDN-SERIES JACKS & DJS-SERIES JACK STANDS.



SDS-150/200N



SDLC LOAD CAP



EXTENSION 100 - 500 mm

Model Number	Capacity (ton)	Description	A Diameter (mm)	B Height (mm)	Spigot Depth (mm)	Spigot Diameter (mm)	Weight (kg)	Suits Model(s)
SDE100-100	70/100	100 mm Extension	126	100	60	50	7	SDL/SDN 70 & 100 ton
SDE100-150	70/100	150 mm Extension	126	150	60	50	7	
SDE100-200	70/100	200 mm Extension	126	200	60	50	7	
SDE100-300	70/100	300 mm Extension	126	300	60	50	13	
SDE100-400	70/100	400 mm Extension	126	400	60	50	13	
SDLC-100	70/100	Serrated Steel Load Cap*	112	22	60	50	3	
SDS-100N	70/100	Serrated Tilt Saddle	108	50	60	50	5	SDL/SDN/DJS 150 ton
SDE150-150	150	150 mm Extension	126	150	60	50	7	
SDE150-200	150	200 mm Extension	126	200	60	50	7	
SDE150-250	150	250 mm Extension	126	250	60	50	7	
SDE150-300	150	300 mm Extension	126	300	60	50	13	
SDE150-350	150	350 mm Extension	126	350	60	50	13	
SDLC-150	150	Serrated Steel Load Cap*	126	22	60	50	3	SDL/SDN/DJS 150 & 200 ton
SDS-150/200N	150/200	Serrated Tilt Saddle	126	59	60	50	5	
SDE200-100	200	100 mm Extension	141	100	60	50	8	SDL/SDN/DJS 200 ton
SDE200-150	200	150 mm Extension	141	150	60	50	8	
SDE200-200	200	200 mm Extension	141	200	60	50	15	
SDE200-300	200	300 mm Extension	141	300	60	50	15	
SDE200-400	200	400 mm Extension	141	400	60	50	15	
SDE200-500	200	500 mm Extension	141	500	60	50	15	
SDLC-200	200	Serrated Steel Load Cap*	126	22	60	50	4	

* Supplied as standard

Custom load caps are available - consult Durapac



WARNING...
Do not stack extensions

SERRATED STEEL LOAD CAP

included as standard



CARRY HANDLE INCLUDED

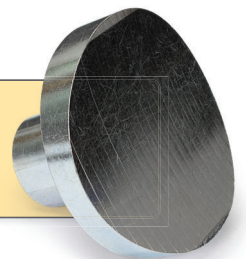
made from high strength aluminium

U-RINGS

for mechanical load support



Radius saddles available - consult Durapac



Model Number	Capacity (ton)	Description	Height (mm)	Weight (kg)	Suits Model(s)
SDNU-100-15	100	15 mm U-ring Saddle	15	0.6	SDN 100 ton
SDNU-100-25	100	25 mm U-ring Saddle	25	0.9	
SDNU-100-75	100	75 mm U-ring Saddle	75	2.8	
SDNU-100-100	100	100 mm U-ring Saddle	100	3.6	
SDNU-100-250	100	250 mm U-ring Saddle	250	9.0	
SDNU-200-15	150/200	15 mm U-ring Saddle	15	CONTACT DURAPAC	SDN 150 ton
SDNU-200-25	150/200	25 mm U-ring Saddle	25		
SDNU-200-75	150/200	75 mm U-ring Saddle	75		
SDNU-200-100	150/200	100 mm U-ring Saddle	100		
SDNU-200-250	150/200	250 mm U-ring Saddle	250		