

**DURAPAC IN LINE FLOW AND PRESSURE CONTROL VALVES** ALLOW THE SYSTEM DESIGNER GREAT FLEXIBILITY AND CONTROL.

Available options include a needle type flow control valve, in line adjustable pressure relief valve, 2 - 8 outlet needle valve blocks and check valves with manual bypass. The VCB-2 load lowering counterbalance valve offers smooth, chatter free lifting and lowering when used with double acting cylinders. It is also available as a manifold version VCB-3 which can be teamed with Durapac power pumps.

### VCB-1

Load lowering counterbalance valve for smooth controlled lifting and lowering. Pilot pressure adjusting range 50-350 bar. Ports 3/8"-BSP parallel female (pilot port 1/4"-BSP parallel female). Supplied with 2 each 3/8"-BSPP x 3/8"-NPT male nipples



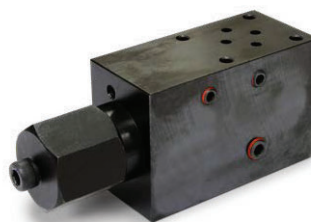
### VCB-2

3/8"-NPT counterbalance valve for controlled lifting and lowering of heavy loads. Pilot pressure is adjustable from 1,900 to 3,000 psi. Designed for inline mounting at the cylinder



### VCB-3

Counterbalance valve for controlled lifting and lowering of heavy loads. Pilot pressure is adjustable from 1,900 to 3,000 psi. Designed for manifold mounting on Durapac power units



### VNV-1

3/8"-NPT female needle valve



### VNV-2

1/4"-NPT female needle valve



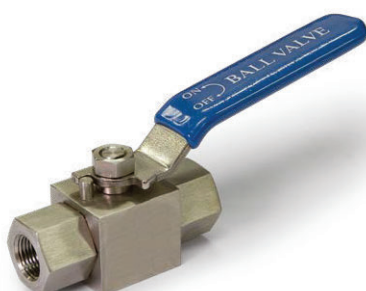
### VCV-33

3/8"-NPT female load lowering check valve with manual bypass. Needle valve adjustment can be locked via the incorporated locknut



### VBV-1

3/8"-NPT ball valve, stainless steel with PEEK seats



### VRV-1

3/8"-NPT pressure relief valve adjustable from 300 - 10,000 psi (drain port is 1/8"-NPT)



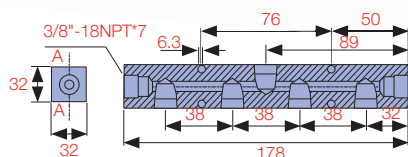
### VCV-66

3/8"-NPT female load lowering check valve with manual bypass



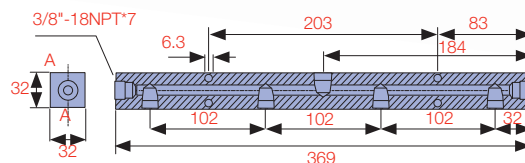
*RM-7S*

7 port steel bodied return manifold - 7 x 3/8"-NPT female ports



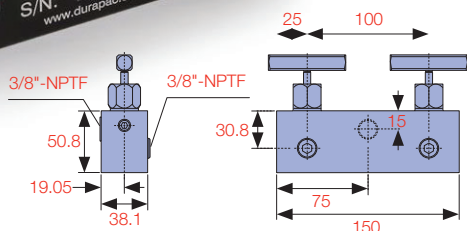
## RM-7L

**7 port steel bodied return manifold - 7 x 3/8"-NPT female ports**



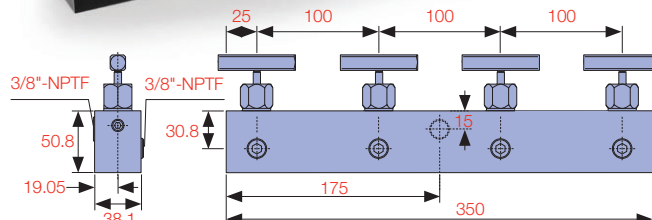
VMN-2

2 way aluminium bodied manifold with needle valves - 2 x 3/8"-NPT female outlet ports, 1 x 3/8"-NPT female inlet port (centrally located opposite to the 2 outlet ports)



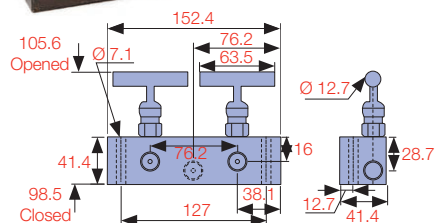
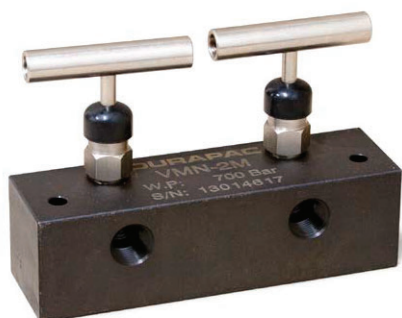
VMN-4

4 way aluminium bodied manifold with needle valves - 4 x 3/8"-NPT female outlet ports, 1 x 3/8"-NPT female inlet port (centrally located opposite to the 4 outlet ports)



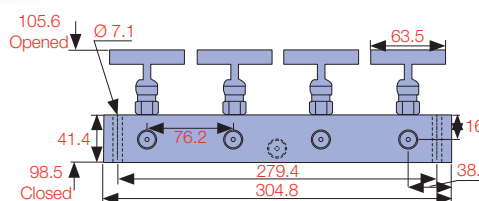
## VMN-2M

2 way steel bodied manifold with needle valves - 2 x 3/8"-NPT female outlet ports, 1 x 3/8"-NPT female inlet port (centrally located opposite to the 2 outlet ports)



## VMN-4M

4 way steel bodied manifold with needle valves - 4 x 3/8"-NPT female outlet ports,  
1 x 3/8"-NPT female inlet port (centrally located opposite to the 4 outlet ports)



## NEEDLE VALVE MANIFOLDS WITH TRANSPORT FRAMES

DURAPAC **VMN-SERIES** NEEDLE VALVE MANIFOLDS WITH TRANSPORT FRAMES ARE DESIGNED TO BE USED WITH 700 BAR HAND PUMPS AND POWER UNITS.

They offer a convenient solution for operating multiple cylinders from a single input source. Each manifold includes FGA-1 gauge adaptors, and PG-63 liquid filled 63 mm diameter pressure gauges. Versions with CR-6 female couplers on the input and output ports are available. All ports are 3/8" NPT female.



VMN-8M-GFC

VMN-4M-GFC

Model Number	Control Outlets	Qty. PG-63 Included	Qty. FGA-1 Included	Qty. CR-6 Included	Pressure Rating (bar)	Width (mm)	Height (mm)	Depth (mm)	Net Weight (kg)
VMN-2M-GF	2	2	2	-	700	370	280	180	6.85
VMN-2M-GFC	2	2	2	3	700	370	280	180	7.95
VMN-4M-GF	4	4	4	-	700	370	280	180	10.25
VMN-4M-GFC	4	4	4	5	700	370	280	180	11.25
VMN-6M-GF	6	6	6	-	700	535	280	180	12.60
VMN-6M-GFC	6	6	6	7	700	535	280	180	14.00
VMN-8M-GF	8	8	8	-	700	685	280	180	13.20
VMN-8M-GFC	8	8	8	9	700	685	280	180	17.00