

THE **syncMASTER** IS AN ADVANCED HYDRAULIC SYSTEM DESIGNED FOR PRECISION LIFTING AND SYNCHRONIZATION. IT OFFERS A RELIABLE, EFFICIENT SOLUTION FOR HEAVY LIFTING APPLICATIONS THAT REQUIRE PRECISE CONTROL OVER MULTIPLE LIFTING POINTS.

With its cutting-edge technology, the syncMASTER ensures loads are raised evenly and safely, minimising the risk of damage or accidents. It is ideal for use in industries such as construction, mining, and infrastructure, where heavy machinery or structures need to be lifted with precision. The system is user-friendly, providing real-time feedback and control, ensuring accuracy and safety throughout the process. Its robust design guarantees durability and performance, making it a trusted choice for demanding lifting tasks.



DSM-40312



Australian designed and built

Model No.	Hydraulic Outlets A & B Ports	Motor (kW)	Voltage	Amps	Flow Rate (Lpm)	Max. Pressure Rating (bar)	Usable Oil Capacity (L)	Dry Weight (kg)	Dimensions W x L x H (mm)
DSM4034	4	4.0	400 Volt, 50 Hz, 3 Phase OR 440-480 Volt, 60 Hz, 3 Phase	8.85	2.4	700	300	620	1,120 x 1,210 x 1,350
DSM4038	8	4.0		8.85	2.4	700	300	700	1,120 x 1,210 x 1,350
DSM7548	8	7.5		13.40	4.8	700	500	950	1,120 x 1,210 x 1,485
DSM40312	12	4.0*		8.85	2.4	700	300**	780	1,120 x 1,210 x 1,350
DSM40316	16	4.0*		8.85	2.4	700	300**	860	1,160 x 1,210 x 1,350
DSM40320	20	4.0*		8.85	2.4	700	300	940	1,120 x 1,210 x 1,350

* 7.5 kW option available

** 500 L option available

WIFI ENABLED

REMOTE TECH LOGIN

the latest RTL for support, monitoring & auto email alerts

INCLINED PLC AND JOYSTICK

for ease of operation

EMERGENCY STOP

located directly above the touchscreen

EXTERNAL USB PORT

allows data to be downloaded for analysis and storage

17" INTEGRATED TOUCHSCREEN

with built in computer



NUMBER OF LIFTING POINTS

1 - 320

ACCURACY

0.5 mm

MAXIMUM OPERATING PRESSURE

700 bar

A

SPECIALTY LIFTING SYSTEMS

MODULAR DESIGN

can be configured with 4, 8, 12, 16 or 20 lifting points per block

LIFTING POINTS

for sling use

CONTROL VALVES

allow precise flow control using high cycle, high speed solenoid valves

HYDRAULIC OUTLETS

control either single or double acting cylinders with up to 20 outlets

300 L OR 500 L

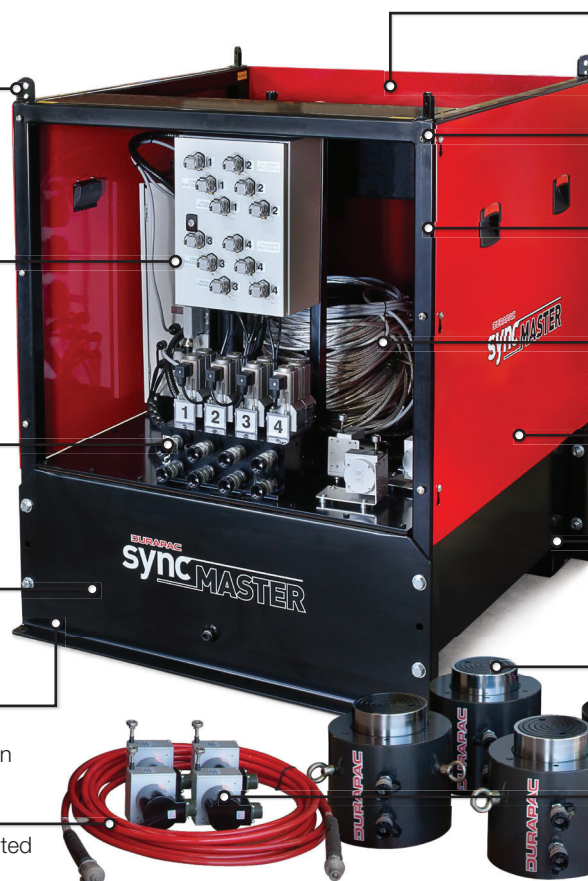
usable oil capacity with return line filter

POWDER COATED

components enhance the appearance and reduce corrosion

MAINTAIN CONNECTION

hydraulic hoses can stay connected while covers are reattached



METRIC OR IMPERIAL

screen display option

LOCKABLE

for security

RIGID STEEL FRAME

made from 50 mm rolled hollow section (RHS) for extra strength

DATA CABLES

use military and DIN fittings

EXTERNAL COVERS

are easily removed

LIFTING POINTS

for forklift

FLEXIBLE TO EACH APPLICATION

cylinders can be changed to best suit the application

STROKE TRANSDUCERS

achieve precise positional control by combining high precision linear transducers with high speed counter cards

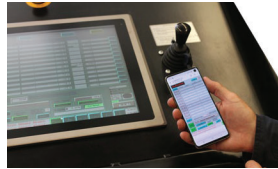


Australian designed and built



REMOTE OPERATION

Use a tablet or mobile phone &/or joystick to operate and monitor remotely.



INTEGRATED TOUCHSCREEN

17" full colour touchscreen withstands harsh environments. Toughened glass makes it both scratch and cut resistant.



VARIABLE FLOW CONTROL

Variable frequency drive motor gives a wider pump flow range. This is controlled by a joystick controller that governs flow and directional control of the hydraulic cylinders.



CONTROL VALVES

High cycle, high speed solenoid valves allow precise flow control. All valves are leak free and have a 100% duty cycle.



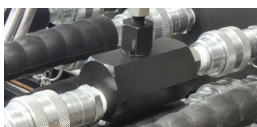
PRESSURE TRANSDUCERS

Monitor load conditions at each lift point for maximum safety. Optional load cells are available for high precision weighing operations.



STROKE TRANSDUCERS

High precision 40 pulses per mm linear transducers combined with high speed counter cards achieve precise positional control. Various stroke transducers are available including internal cylinder design. Optional tilt meters are also available.



ADJUSTABLE FLOW CONTROL VALVES

Controls the flow during decent and can be preset and locked.

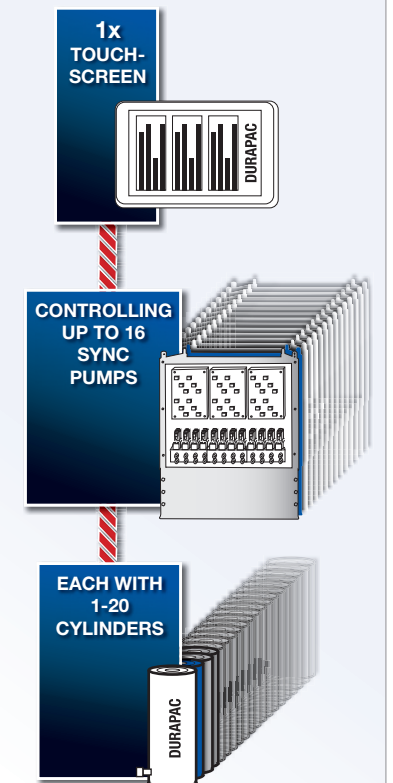


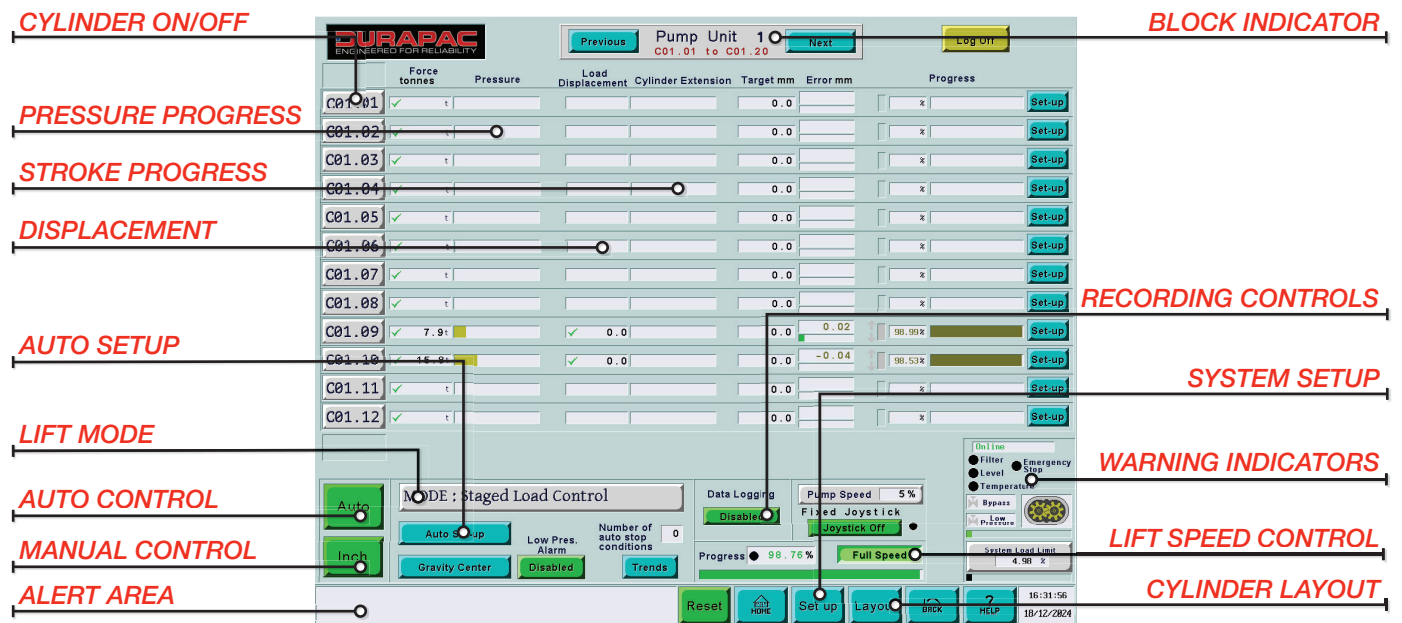
LIFT MONITORING AND DATA STORAGE

Full pressure and displacement data presentation are available on screen to monitor the lift in real time. Lift data are stored and able to be downloaded in a format suitable for importing into Excel for further analysis and record keeping. This gives a permanent record of the displacement and load on every cylinder at defined time intervals.



One touchscreen can control 1 - 16 sync pumps which can each power 1 - 20 cylinders. Creating a total potential of 320 lift points





STANDARD INCLUSIONS

- Pressure transducers
- Analogue pressure gauge
- Adjustable pressure relief valves (Adv. & Ret.)
- Oil temperature alarm
- Oil filter alarm
- Emergency stop
- 17" full colour integrated touchscreen
- Flow control valves
- Powder coated finish

OPTIONAL ITEMS

- Externally mounted stroke encoder
- Internally mounted stroke encoder
- Dual encoder inputs per lift point
- Remote tablet & joystick for full function remote control
- Remote tech login (RTL) for support, monitoring & auto email alerts

