

RFJ-300

THE **RFJ-SERIES** IS A SPRING RETURN, COMPACT FLAT CYLINDER DESIGNED FOR USE IN NARROW SPACES AND AREAS WITH LOW OVERHEAD CLEARANCE.

They can be used in maintenance, machinery levelling, construction and mining applications. All RFJ-Series cylinders feature a hard chrome cylinder bore and piston rod for maximum corrosion resistance and bronze overlay piston bearing area to resist side load induced damage. Mounting holes are standard on all models and a grooved piston rod end improves load grip. For applications requiring extra closed height flexibility the RFJ stack plate kits from 5-30 ton capacity are the perfect tool.

RFJ-1500

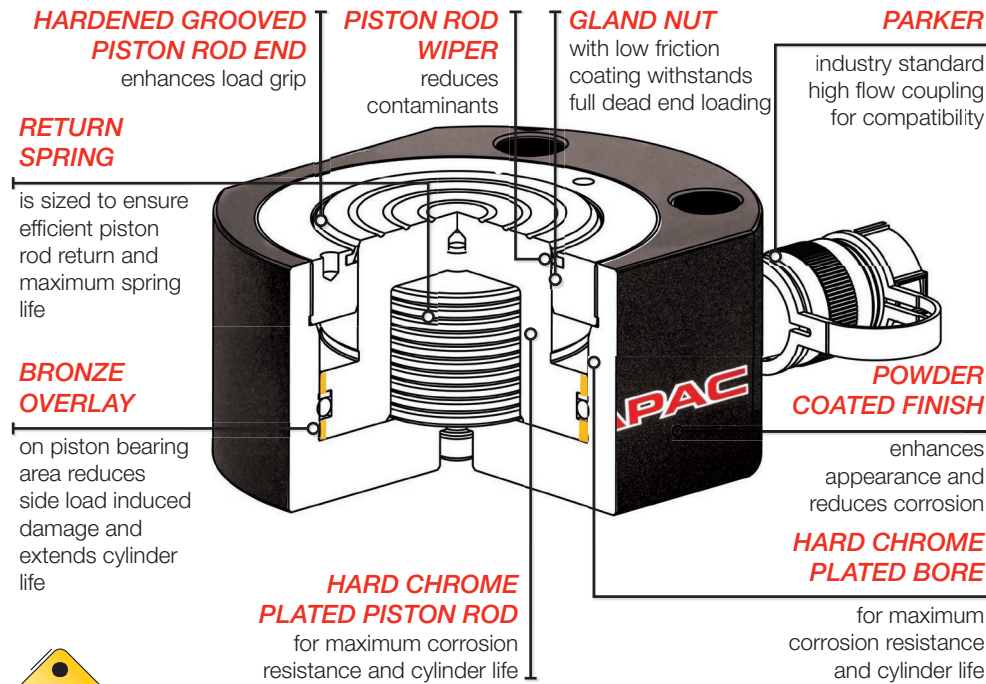
RFJ-750

RFJ-100

EXCEEDS
ANSI/ASME B30.1
SAFETY
STANDARDS

Model Number	Cylinder Capacity ton* / kN		Stroke (mm)	Cylinder Effective Area (cm ²)	Oil Capacity (cm ³)	A Collapsed Height (mm)	B Extended Height (mm)	D Outside Diameter (mm)	E Cylinder Bore Diameter (mm)	F Piston Rod Diameter (mm)	H Base to Advance Port (mm)
RFJ-50	5	45	6	6.5	4	32	38	58 x 41	28.7	25.4	16
RFJ-100	10	101	12	14.5	17	43	55	82 x 55	42.9	38.1	19
RFJ-200	20	201	11	28.7	32	51	62	101 x 76	60.5	50.8	19
RFJ-300	30	295	13	42.1	55	58	71	117 x 95	73.2	63.4	19
RFJ-500	50	435	16	62.1	99	66	82	140 x 114	88.9	69.8	19
RFJ-750	75	718	16	102.6	164	79	95	165 x 139	114.3	82.6	19
RFJ-1000	100	887	16	126.7	203	85	101	178 x 153	127.0	92.2	19
RFJ-1500	150	1,386	16	198.1	317	100	116	215 x 190	158.8	114.3	23

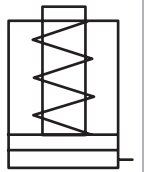
* Nominal Cylinder Capacity in ton - see kN values for actual capacity



CAPACITY RANGE
5 - 150 ton

STROKE RANGE
6 - 16 mm

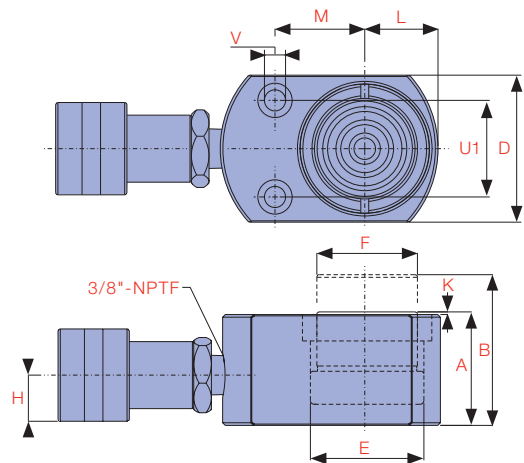
MAXIMUM OPERATING PRESSURE
700 bar



RFJ-50 is supplied with a whip hose and CR-6 high flow coupling



Durapac offer a range of stack plate kits from 5-30 ton capacity for an extra boost in collapsed height. Refer to CSK-Series for more details

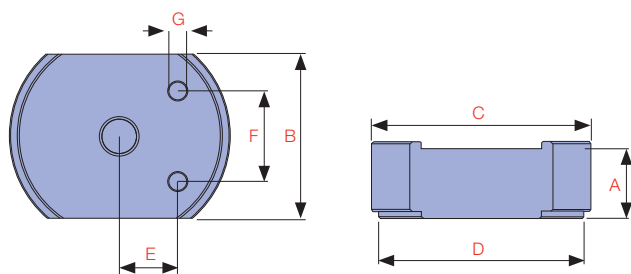


K Load cap Protrusion from Cylinder Body (mm)	L Piston Rod to Body (mm)	M Piston Rod to Mounting Hole (mm)	Base Mounting Holes				Weight (kg)	Model Number	Handle Type
			U1 Hole Pitch (mm)	V Hole Diameter (mm)	Counter Bore Diameter (mm)	Counter Bore Depth (mm)			
1	20	22	28.5	5.5	7.9	4.3	1.0	RFJ-50	
1	27	34	36.6	7.1	10.7	7.9	1.4	RFJ-100	
1	39	39	49.3	10.0	15.1	9.9	3.1	RFJ-200	
2	47	44	52.3	10.0	15.9	11.2	4.5	RFJ-300	
2	57	53	66.5	11.9	19.0	12.7	6.8	RFJ-500	
2	69	66	76.2	13.5	20.6	14.2	11.3	RFJ-750	♣
2	76	74	76.2	13.5	20.6	14.2	14.5	RFJ-1000	♣
2	95	82	117.3	13.5	20.6	14.2	26.3	RFJ-1500	♣

HANDLE TYPE: ♣ WELDED



Durapac offer a range of lightweight hand pumps, the perfect choice when portable manual power is desirable



Kit Model No.	Includes Cylinder Model	STD Cylinder Height (mm)	Dimensions (mm)										Kit Weight (kg)
			A - Stack Plate Height				B	C	D	E	F	G	
			1	2	3	4							
CSK-5	RFJ-50	32	3.4	12.7	25.4	31.8	41.4	64.7	58.7	13.6	28.5	5.1	2.4
CSK-10	RFJ-100	43	9.9	20.0	39.9	-	55.6	90.6	82.6	20.5	36.6	7.1	3.8
CSK-20	RFJ-200	51	9.9	20.0	39.9	-	76.2	109.6	101.6	28.4	49.3	10.1	7.0
CSK-30	RFJ-300	58	9.9	20.0	39.9	-	95.3	125.6	117.6	33.4	52.3	10.1	10.1