

D

HYDRAULIC PUMPS & POWER UNITS

THE **DPA-SERIES** OF AIR DRIVEN HYDRAULIC POWER UNITS ARE A FIELD PROVEN ECONOMICAL CHOICE FOR RUNNING SMALL TO MEDIUM CAPACITY HYDRAULIC CYLINDERS AND TOOLS WHEN COMPRESSED AIR IS AVAILABLE.

All models have a maximum working pressure of 700 bar and a convenient carry handle is built into the treadle. Models with 3.5 – 7.5 L reservoirs are made from durable steel. All power units are supplied pre-filled with oil and ready for immediate use.



DPA-18

DPA-50D

DPA-50R

### FEATURES



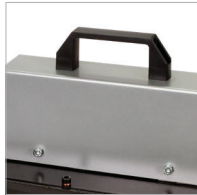
- Choice of 1.6, 1.8, 3.5, 4.6 & 7.5 L usable oil reservoirs



- Remote actuation for adv/hold/retract functions



- 3 position treadle for adv/hold/retract functions



- Convenient carry handle included



- 3.5, 4.6 & 7.5 L reservoirs are made from durable steel



- 4 way directional control valve to operate double acting cylinders



- Release detent function enhances productivity



- Recommended air pressure range 3 - 10 bar

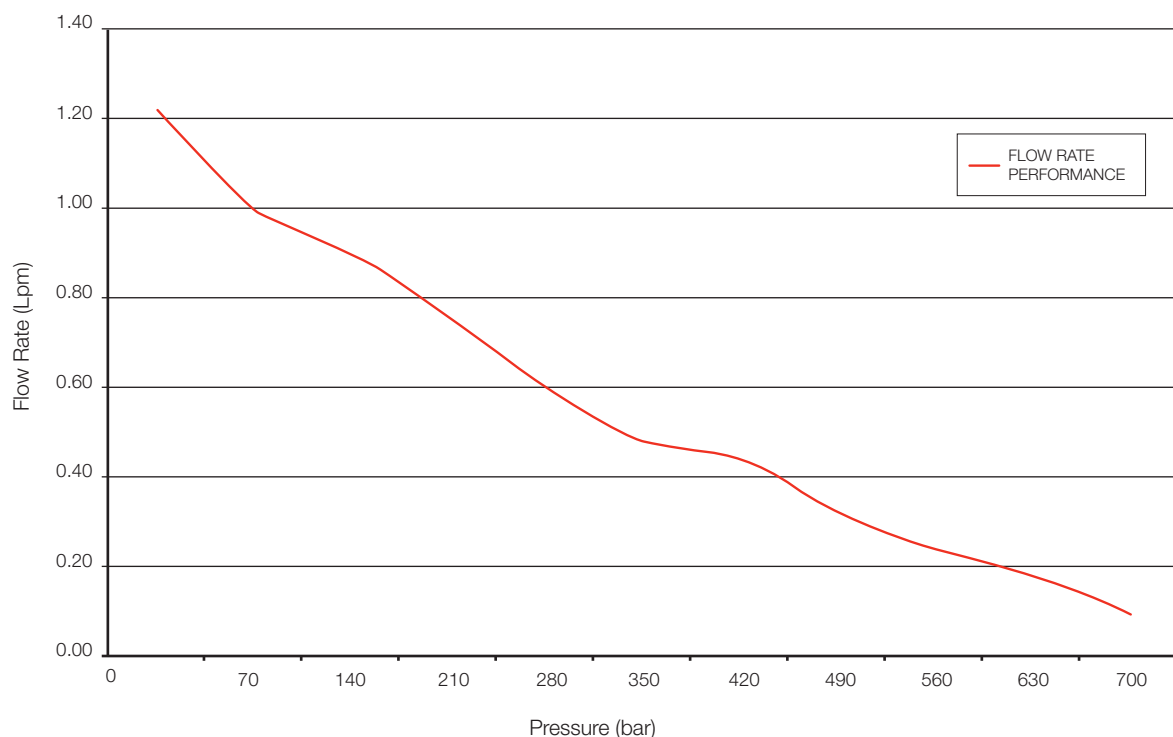


**OIL CAPACITY RANGE**  
**1.6 - 7.5 L**

**AIR PRESSURE RANGE**  
**3 - 10 bar**

**MAXIMUM OPERATING PRESSURE**  
**700 bar**

### DPA-SERIES PRESSURE VS FLOW RATE





DPA-18



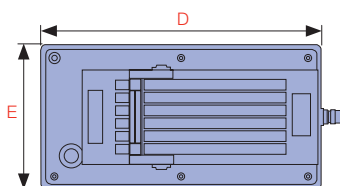
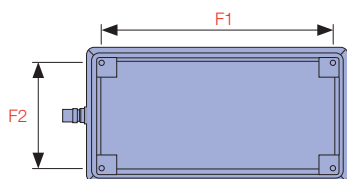
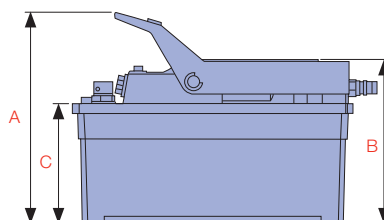
DPA-78

**DPA-SERIES** SINGLE ACTING POWER UNITS ARE THE STANDARD WORK HORSES OF THE RANGE.

Each has a 3 position treadle with advance/hold/retract functions, dust cover protection for the release control valve and a reinforced metal oil reservoir.

#### BASE PLATE DIMENSIONS

Model Number	F1 x F2	Hole Thread Size
DPA-16	233 x 105	M5
DPA-16D	234 x 107	M5
DPA-16R	234 x 107	M5
DPA-18	228 x 102	M6



Model Number	Used with Cylinder	Usable Oil Capacity (cc)	Pressure Rating (bar)	Output Flow Rate (cm <sup>3</sup> /min)		Air Pressure Range (bar)	Dimensions (mm)					Weight (kg)
				No Load	Load		A	B	C	D	E	
DPA-16	S/A	1,600	700	1,220	95	3 - 8	200	148	113	255	128	6.6
DPA-16D	D/A	1,600	700	1,220	95	3 - 8	220	236	113	263	136	6.6
DPA-16R	S/A	1,600	700	1,220	95	3 - 8	240	204	110	263	136	6.6
DPA-18	S/A	1,800	700	1,200	160	6 - 10	225	171	131	260	128	8.2
DPA-40	S/A	3,500	700	1,220	95	3 - 8	195	152	110	330	190	10.4
DPA-40D	D/A	3,500	700	1,220	95	3 - 8	217	233	110	330	190	11.2
DPA-40R	S/A	3,500	700	1,220	95	3 - 8	217	180	110	330	190	10.6
DPA-50	S/A	4,600	700	1,220	95	3 - 8	195	152	110	372	231	12.0
DPA-50D	D/A	4,600	700	1,220	95	3 - 8	217	233	110	372	231	14.5
DPA-50R	S/A	4,600	700	1,220	95	3 - 8	240	204	110	372	231	12.6
DPA-78	S/A	7,500	700	1,220	95	3 - 8	195	152	110	422	281	17.7
DPA-78D	D/A	7,500	700	1,220	95	3 - 8	217	237	110	422	281	18.5
DPA-78R	S/A	7,500	700	1,220	95	3 - 8	240	204	110	422	281	18.6



THE **DPA-SERIES** DOUBLE ACTING HYDRAULIC POWER UNITS ARE AIR DRIVEN WITH A 4 WAY/3 POSITION MANUAL DIRECTIONAL CONTROL VALVE.

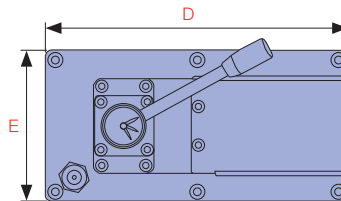
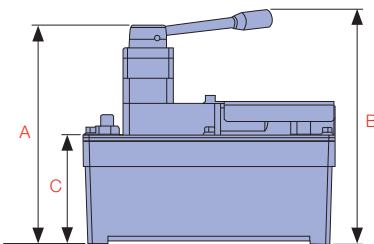
They are designed for operating double acting, small to medium sized cylinders and tools.



DPA-50D



DPA-16D



THE **DPA-SERIES** REMOTE EQUIPPED HYDRAULIC POWER UNITS ARE AIR DRIVEN AND IDEALLY SUITED WHERE A REMOTE ACTUATION OF THE POWER UNIT IS REQUIRED.

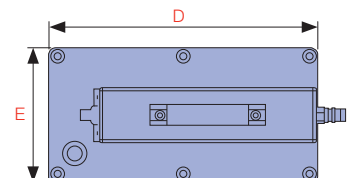
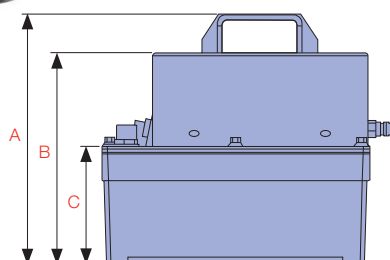
The power unit will operate small to medium sized single acting cylinders. Advance-hold-retract is controlled by a remote pendant with a 2.5 M lead.



DPA-78R



DPA-16R



OIL CAPACITY RANGE

**1.6 - 7.5 L**

AIR PRESSURE RANGE

**3 - 10 bar**

MAXIMUM OPERATING PRESSURE

**700 bar**