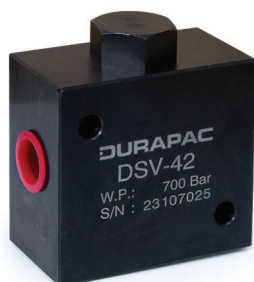


**DURAPAC IN LINE FLOW AND PRESSURE CONTROL VALVES** ALLOW THE SYSTEM DESIGNER GREAT FLEXIBILITY AND CONTROL.

Available options include a needle type flow control valve, in line adjustable pressure relief valve, 2 - 8 outlet needle valve blocks and check valves with manual bypass. The VCB-2 load lowering counterbalance valve offers smooth, chatter free lifting and lowering when used with double acting cylinders. It is also available as a manifold version VCB-3 which can be teamed with Durapac power pumps.

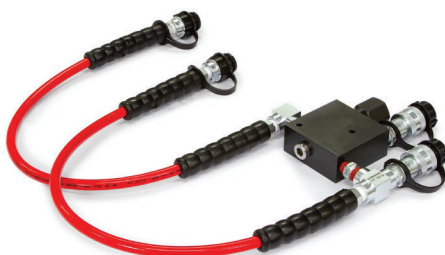
### DSV-42

Pilot operated check valve can be cylinder mounted to hold the load in case of system pressure loss. Pilot ratio 6.5:1. Ports are 3/8" NPT female



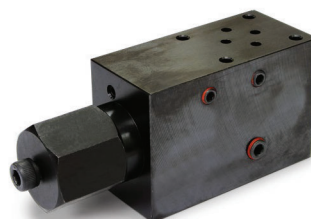
### VCB-2

3/8"-NPT counterbalance valve for controlled lifting and lowering of heavy loads. Pilot pressure is adjustable from 130 - 207 bar. Designed for inline mounting at the cylinder and includes 750 mm whip hoses with CH-6 male couplings to connect to the cylinder, and CR-6 female couplers for pump input



### VCB-3

Counterbalance valve for controlled lifting and lowering of heavy loads. Pilot pressure is adjustable from 130 - 207 bar. Designed for manifold mounting on Durapac power units



### VNV-1

3/8"-NPT female needle valve



### VNV-2

1/4"-NPT female needle valve



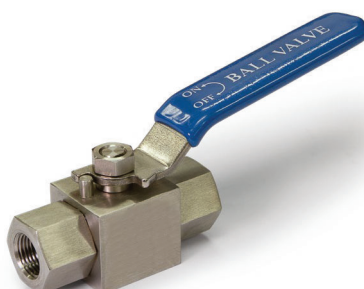
### VCV-33

3/8"-NPT female load lowering check valve with manual bypass. Needle valve adjustment can be locked via the incorporated locknut



### VBV-1

3/8"-NPT female ball valve, stainless steel with PEEK seats



### VRV-1

3/8"-NPT female pressure relief valve adjustable from 20 - 700 bar (drain port is 1/8"-NPT female)



### VCV-66

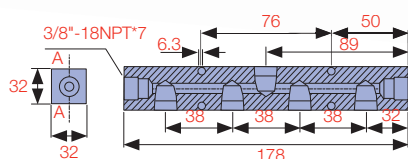
3/8"-NPT female load lowering check valve with manual bypass



## IN LINE FLOW AND PRESSURE CONTROL VALVES

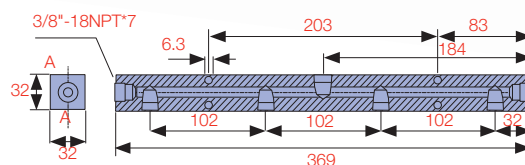
*RM-7S*

7 port steel bodied return manifold - 7 x 3/8"-NPT female ports



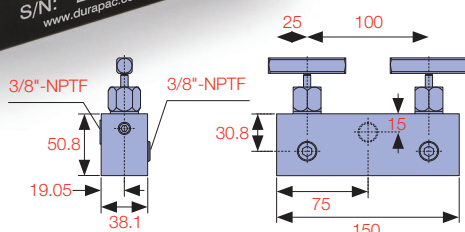
## RM-7L

**7 port steel bodied return manifold - 7 x 3/8"-NPT female ports**



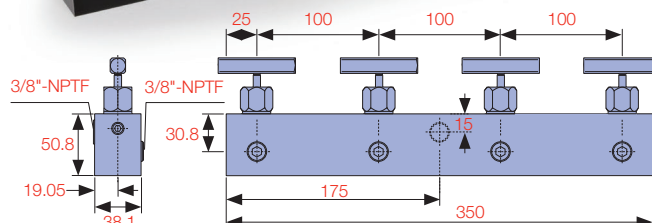
## VMN-2

2 way aluminium bodied manifold with needle valves - 2 x 3/8"-NPT female outlet ports, 1 x 3/8"-NPT female inlet port (centrally located opposite to the 2 outlet ports)



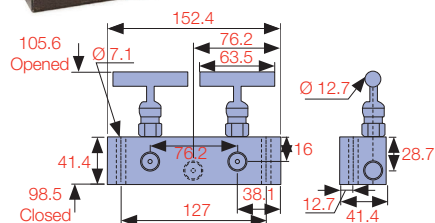
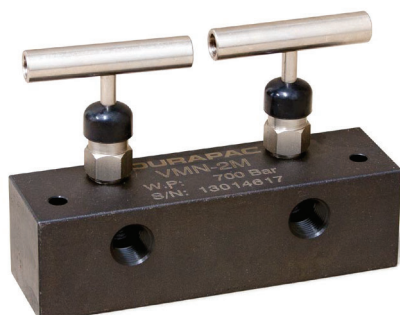
VMN-4

4 way aluminium bodied manifold with needle valves - 4 x 3/8"-NPT female outlet ports, 1 x 3/8"-NPT female inlet port (centrally located opposite to the 4 outlet ports)



## VMN-2M

2 way steel bodied manifold with needle valves - 2 x 3/8"-NPT female outlet ports, 1 x 3/8"-NPT female inlet port (centrally located opposite to the 2 outlet ports)



## VMN-4M

4 way steel bodied manifold with needle valves - 4 x 3/8"-NPT female outlet ports,  
1 x 3/8"-NPT female inlet port (centrally located opposite to the 4 outlet ports)

