

SAFE D LOCK®
+ POWERDRIVE

THE **SAFE D LOCK** (SDL) JACK + **POWERDRIVE** IS A SELF-PROPELLED LIFTING JACK AND RATED VEHICLE JACK STAND FOR HEAVY MINING VEHICLES.

The revolutionary design puts the operators' safety first. The jack uses patented oil-bathed internal locking quadrants with a 3:1 safety factor. A 5 M long remote lead allows the operator to be safely away from the lifting area during lifting, lowering and locking. Dual independent DC motors powered by two M18 Red Lithium™ batteries drive the wheels and can self-propel up slopes of 5 degrees. The Safe D Lock jack + POWERDRIVE is compact, portable and safe. It is the perfect choice for the workshop or service vehicle.



Australian designed and built to meet AS/NZS 2693:2007 standard for vehicle jacks, it also meets AS/NZS 2538:2004 standard for vehicle support stands

SDL-15096-PD

Model Number	Jack Capacity			Cylinder Effective Area (cm²)	A Collapsed Height (mm)**	B Base Plate Diameter (mm)	C Folded Length (mm)	D Jack Length (mm)	Stroke (mm)	Max. Lift Height (mm)***	Oil Tank Capacity (L)	Weight (kg)
	Metric (tonne)	US (ton)*	(kN)									
SDL-07068-PD	70	77	686	143	680	505	1,147	2,174	404	1,408	24	390
SDL-07081-PD	70	77	686	143	812	505	1,147	2,174	535	1,680	24	420
SDL-10068-PD	100	110	980	143	680	505	1,147	2,174	404	1,408	24	390
SDL-10081-PD	100	110	980	143	812	505	1,147	2,174	535	1,680	24	420
SDL-15068-PD	135	150	1,324	254	680	505	1,147	2,174	406	1,408	24	470
SDL-15096-PD	135	150	1,324	254	964	520	1,154	2,181	685	1,680	24	550
SDL-20068-PD	181	200	1,781	254	680	505	1,147	2,174	406	1,408	24	470
SDL-20096-PD	181	200	1,781	254	964	520	1,154	2,181	685	1,680	24	550

A non-POWERDRIVE option is also available – to order, use jack model number without “-PD” suffix (eg. SDL-10068)

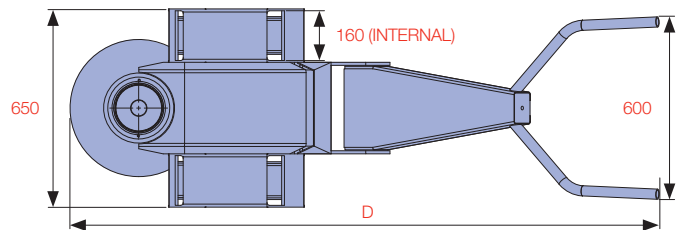
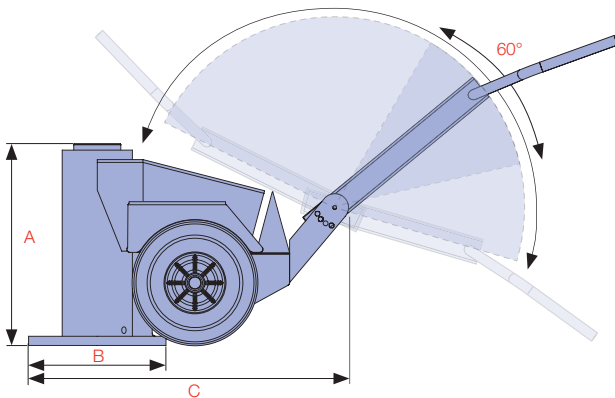
* Nominal Cylinder Capacity in ton - see kN values for actual capacity. ** Includes load cap height of 22 mm

*** Maximum lift height for AS/NZS 2538:2004 Vehicle Support Stand Rating



A

SPECIALTY LIFTING SYSTEMS



PATENTED FAIL SAFE

spring loaded mechanical locking system. Can be locked in 13 mm increments

SERRATED STEEL LOAD CAP

included as standard

AIR MOTOR

powered by a 3.9 kW Gast® air motor. Working air pressure range 5.6 - 7.0 bar, air consumption range 2,265 - 4,530 Lpm

HIGH STRENGTH STEEL BASE PLATE

resists deformation

INDEPENDENT DEADMAN SWITCHES#

for easy manoeuvring and safety

MECHANICAL QUADRANT LOCKS

hold a minimum 3 x rated jack capacity without failure

LOCK INDICATORS

confirm 'locked' and 'unlocked' status

LIFTING POINTS

allows easy forklift access

THREE POSITION TOGGLE#

F (Forward) N (Neutral) R (Reverse)

TILT ADJUSTABLE HANDLE

for ease of manoeuvring and compact storage

ALUMINIUM REMOTE PENDANT

with mounted lock and unlock indicators & 5 M hose for added safety

LOCKABLE ISOLATION VALVE

relieves downstream air for extra safety and security

TYRES WITH ALLOY RIMS

heavy duty, polyurethane filled, puncture-proof, large rolling diameter (450 mm)



See Page 16 for SD-Accessories

only available on -PD models

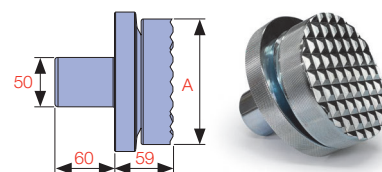
A

SPECIALTY LIFTING SYSTEMS

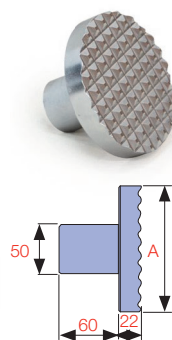


SDL WITH CUSTOM LOAD CAP

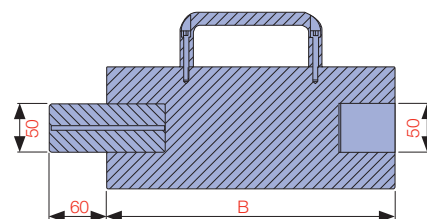
THE SD-ACCESSORIES ARE DESIGNED TO SUIT THE COMPACT **SAFE D LOCK** JACK AND IT'S EXTENDED FAMILY OF JACKS. THIS INCLUDES THE **POWERDRIVE**, EXTRA COMPACT, TALLEST, SLIMLINE & SDN-SERIES JACKS & DJS-SERIES JACK STANDS.



SDS-150/200N



SDLC LOAD CAP



EXTENSION 100 - 500 mm

Model Number	Capacity (ton)	Description	A Diameter (mm)	B Height (mm)	Spigot Depth (mm)	Spigot Diameter (mm)	Weight (kg)	Suits Model(s)
SDE100-100	70/100	100 mm Extension	126	100	60	50	7	SDL/SDN 70 & 100 ton
SDE100-150	70/100	150 mm Extension	126	150	60	50	7	
SDE100-200	70/100	200 mm Extension	126	200	60	50	7	
SDE100-300	70/100	300 mm Extension	126	300	60	50	13	
SDE100-400	70/100	400 mm Extension	126	400	60	50	13	
SDLC-100	70/100	Serrated Steel Load Cap*	112	22	60	50	3	
SDS-100N	70/100	Serrated Tilt Saddle	108	50	60	50	5	SDL/SDN 150 ton & DJS Stands
SDE150-150	150	150 mm Extension	126	150	60	50	7	
SDE150-200	150	200 mm Extension	126	200	60	50	7	
SDE150-250	150	250 mm Extension	126	250	60	50	7	
SDE150-300	150	300 mm Extension	126	300	60	50	13	
SDE150-350	150	350 mm Extension	141	350	60	50	13	
SDLC-150	150	Serrated Steel Load Cap*	126	22	60	50	3	SDL/SDN 150, 200 ton & DJS Stands
SDS-150/200N	150/200	Serrated Tilt Saddle	126	59	60	50	5	
SDE200-100	200	100 mm Extension	141	100	60	50	8	SDL/SDN 200 ton & DJS Stands
SDE200-150	200	150 mm Extension	141	150	60	50	8	
SDE200-200	200	200 mm Extension	141	200	60	50	15	
SDE200-300	200	300 mm Extension	141	300	60	50	15	
SDE200-400	200	400 mm Extension	141	400	60	50	15	
SDE200-500	200	500 mm Extension	141	500	60	50	15	
SDLC-200	200	Serrated Steel Load Cap*	126	22	60	50	4	

* Supplied as standard

Custom load caps are available - consult Durapac

