



Australian designed and built to meet AS/NZS 2693:2007 standard for vehicle jacks, it also meets AS/NZS 2538:2004 standard for vehicle support stands

SDL-10055-KR

Model Number	Jack Capacity			Cylinder Effective Area (cm²)	A Collapsed Height (mm)**	B Base Plate Diameter (mm)	C Folded Length (mm)	D Jack Length (mm)	Stroke (mm)	Max. Lift Height (mm)***	Oil Tank Capacity (L)	Weight (kg)
	Metric (tonne)	US (ton)*	(kN)									
SDL-10055-KR	100	110	980	143	550	505	1,147	2,027	274	1,250	24	270
SDL-10068-KR	100	110	980	143	680	505	1,147	2,027	404	1,408	24	290

* Nominal Cylinder Capacity in ton - see kN values for actual capacity. ** Includes load cap height of 22 mm

*** Maximum lift height for AS/NZS 2538:2004 Vehicle Support Stand Rating

TILT ADJUSTABLE HANDLE

for ease of manoeuvring and compact storage

SERRATED STEEL LOAD CAP

included as standard

LIFTING EYES

allow slinging of the jack

HIGH STRENGTH STEEL BASE PLATE

resists deformation

ALUMINIUM REMOTE PENDANT

with mounted lock and unlock indicators & 5 M hose for added safety

NARROW WIDTH

520 mm maximum width at the wheels

SOLID WHEELS

are cast steel with a polyurethane coating



CAPACITY

**100 tonne
(110 US ton)**

STROKE RANGE

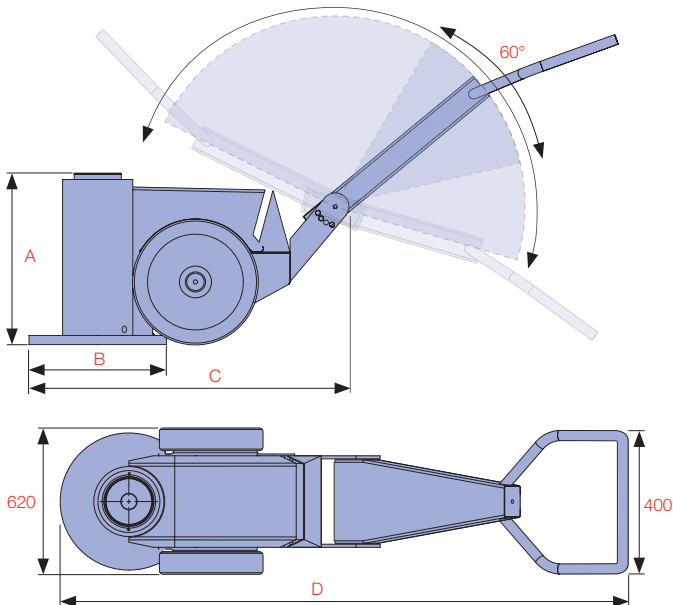
274 - 404 mm

WORKING AIR PRESSURE RANGE

5.6 - 7.0 bar

AIR CONSUMPTION RANGE

2,265 - 4,530 Lpm



See Page 16 for
SD-Accessories



A

SPECIALTY LIFTING SYSTEMS

SD-ACCESSORIES

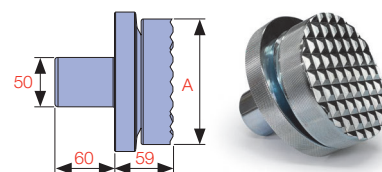
A

SPECIALTY LIFTING SYSTEMS

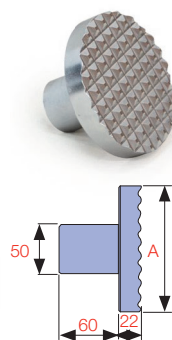


SDL WITH CUSTOM LOAD CAP

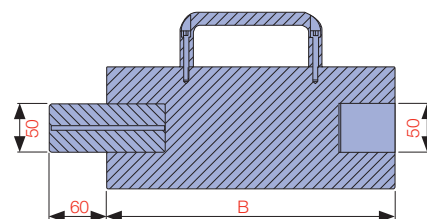
THE SD-ACCESSORIES ARE DESIGNED TO SUIT THE COMPACT **SAFE D LOCK** JACK AND IT'S EXTENDED FAMILY OF JACKS. THIS INCLUDES THE **POWERDRIVE**, EXTRA COMPACT, TALLEST, SLIMLINE & SDN-SERIES JACKS & DJS-SERIES JACK STANDS.



SDS-150/200N



SDLC LOAD CAP



EXTENSION 100 - 500 mm

Model Number	Capacity (ton)	Description	A Diameter (mm)	B Height (mm)	Spigot Depth (mm)	Spigot Diameter (mm)	Weight (kg)	Suits Model(s)
SDE100-100	70/100	100 mm Extension	126	100	60	50	7	SDL/SDN 70 & 100 ton
SDE100-150	70/100	150 mm Extension	126	150	60	50	7	
SDE100-200	70/100	200 mm Extension	126	200	60	50	7	
SDE100-300	70/100	300 mm Extension	126	300	60	50	13	
SDE100-400	70/100	400 mm Extension	126	400	60	50	13	
SDLC-100	70/100	Serrated Steel Load Cap*	112	22	60	50	3	
SDS-100N	70/100	Serrated Tilt Saddle	108	50	60	50	5	SDL/SDN 150 ton & DJS Stands
SDE150-150	150	150 mm Extension	126	150	60	50	7	
SDE150-200	150	200 mm Extension	126	200	60	50	7	
SDE150-250	150	250 mm Extension	126	250	60	50	7	
SDE150-300	150	300 mm Extension	126	300	60	50	13	
SDE150-350	150	350 mm Extension	141	350	60	50	13	
SDLC-150	150	Serrated Steel Load Cap*	126	22	60	50	3	SDL/SDN 150, 200 ton & DJS Stands
SDS-150/200N	150/200	Serrated Tilt Saddle	126	59	60	50	5	
SDE200-100	200	100 mm Extension	141	100	60	50	8	SDL/SDN 200 ton & DJS Stands
SDE200-150	200	150 mm Extension	141	150	60	50	8	
SDE200-200	200	200 mm Extension	141	200	60	50	15	
SDE200-300	200	300 mm Extension	141	300	60	50	15	
SDE200-400	200	400 mm Extension	141	400	60	50	15	
SDE200-500	200	500 mm Extension	141	500	60	50	15	
SDLC-200	200	Serrated Steel Load Cap*	126	22	60	50	4	

* Supplied as standard

Custom load caps are available - consult Durapac

