

C

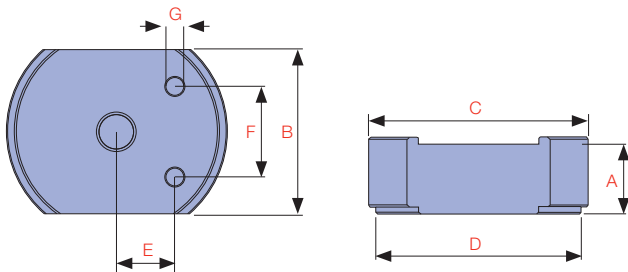
HYDRAULIC CYLINDERS

CYLINDER **STACK PLATE KITS** ARE AN EFFECTIVE ECONOMICAL SOLUTION WHERE AN EXTRA INCREASE IN CLOSED HEIGHT IS DESIRABLE.

They are designed for use with the RFJ-Series flat cylinders and incorporate a magnet to attach to the cylinder. All kits include an RFJ cylinder and carry case.



i Durapac offer a range of lightweight hand pumps, the perfect choice when portable manual power is desirable



Kit Model No.	Includes Cylinder Model	STD Cylinder Height (in)	Dimensions (in)										Kit Weight (lbs)
			A - Stack Plate Height				B	C	D	E	F	G	
			1	2	3	4							
CSK-5	RFJ-50	1.26	0.13	0.50	1.00	1.25	1.63	2.55	2.31	0.53	1.12	0.20	5.3
CSK-10	RFJ-100	1.69	0.39	0.79	1.57	-	2.19	3.57	3.25	0.81	1.44	0.28	8.4
CSK-20	RFJ-200	5.01	0.39	0.79	1.57	-	3.00	4.31	4.00	1.12	1.94	0.40	15.4
CSK-30	RFJ-300	2.28	0.39	0.79	1.57	-	3.75	4.94	4.63	1.31	2.06	0.40	22.3