

THE **RAP-SERIES** IS A SINGLE ACTING LIGHTWEIGHT SPRING RETURN ALUMINUM PULL CYLINDER. IT IS USED IN STEEL STRUCTURAL WORKS, SHIP BUILDING AND TOWER TENSIONING.

All RAP-Series cylinders feature a hard chrome steel piston rod and bronze overlay on the piston bearing area. Clevis eyes can be removed to allow use of the body and piston rod threads.



Model Number	Cylinder Capacity ton* / max.		Stroke (in)	Cylinder Effective Area (in <sup>2</sup> )	Oil Capacity (in <sup>3</sup> )
RAP-106	10	12.3	5.91	2.43	14.40
RAP-206	20	22.2	5.91	4.37	25.87
RAP-306	30	34.6	5.91	6.82	40.28
RAP-506	50	56.7	5.91	11.18	66.03

\* Nominal Cylinder Capacity in ton - see max. values for actual capacity

## SINGLE ACTING ALUMINUM PULL CYLINDERS

### LIGHTWEIGHT ALUMINUM BODY

for maximum portability

### HARD CHROME PLATED PISTON ROD

for maximum corrosion resistance and cylinder life

### RETURN SPRING

is sized to ensure efficient piston rod return and maximum spring life

### REMOVABLE CLEVIS EYES

allow the use of custom attachments. See Optional Clevis Ends below



#### CAPACITY RANGE

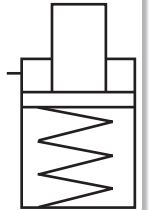
**10 - 50 ton**

#### STROKE

**5.91 in**

#### MAXIMUM OPERATING PRESSURE

**10,150 psi**

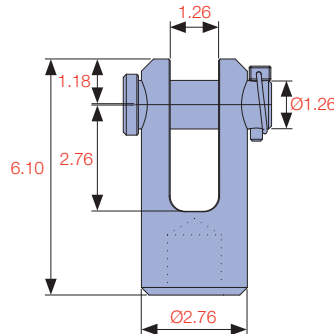
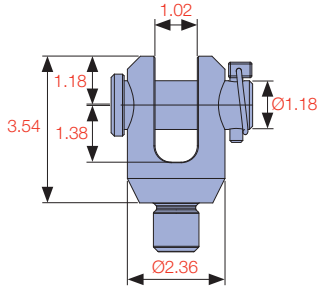


C

HYDRAULIC CYLINDERS

### OPTIONAL CLEVIS ENDS

Note: 2 x Clevis and Pin Sets required per cylinder

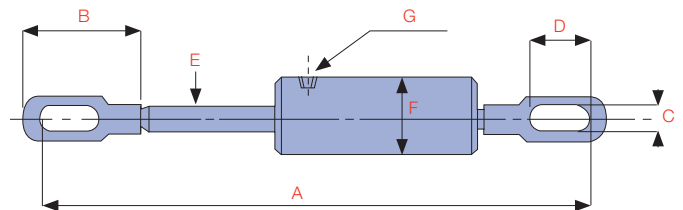
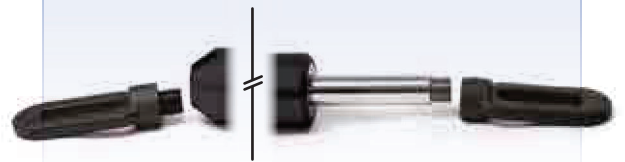


RAP-106-CA suits RAP-106

RAP-206-FCA suits RAP-206

### Standard End Threads

Model Number	Base Thread	Piston Rod Thread
RAP-106	M28 x 2.0 female	M28 x 2.0 female
RAP-206	M39 x 3.0 male	M39 x 3.0 male
RAP-306	M45 x 2.5 male	M45 x 2.5 male
RAP-506	M50 x 3.0 male	M50 x 3.0 male



A Extended Height (in)	B Clevis Length (in)	C Clevis Eye Height (in)	D Clevis Eye Length (in)	E Piston Rod Diameter (in)	F Cylinder Diameter (in)	G Port Thread Type	Weight (lbs)	Model Number	Handle Type
30.04	6.73	1.18	4.53	1.57	3.46	3/8"-NPTF	22.7	RAP-106	♣
31.85	7.91	1.38	5.12	1.77	4.25	3/8"-NPTF	30.6	RAP-206	♣
34.45	9.09	1.73	5.71	1.97	4.92	3/8"-NPTF	41.9	RAP-306	♣
35.31	10.75	1.97	5.91	2.13	6.22	3/8"-NPTF	75.0	RAP-506	♣

HANDLE TYPE: ♣ THREAD