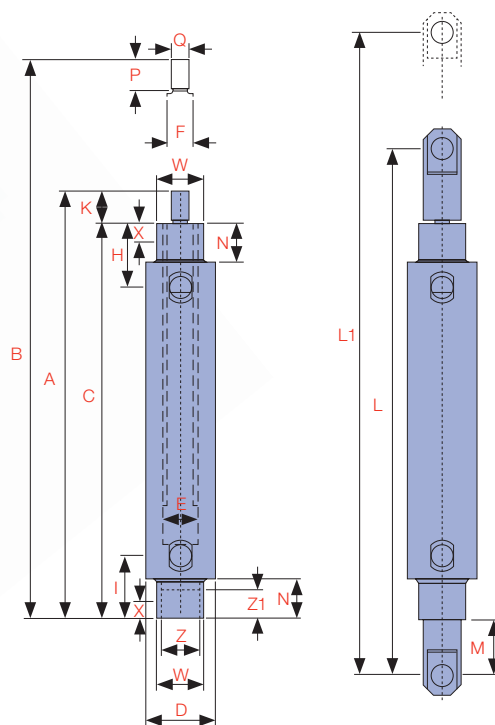




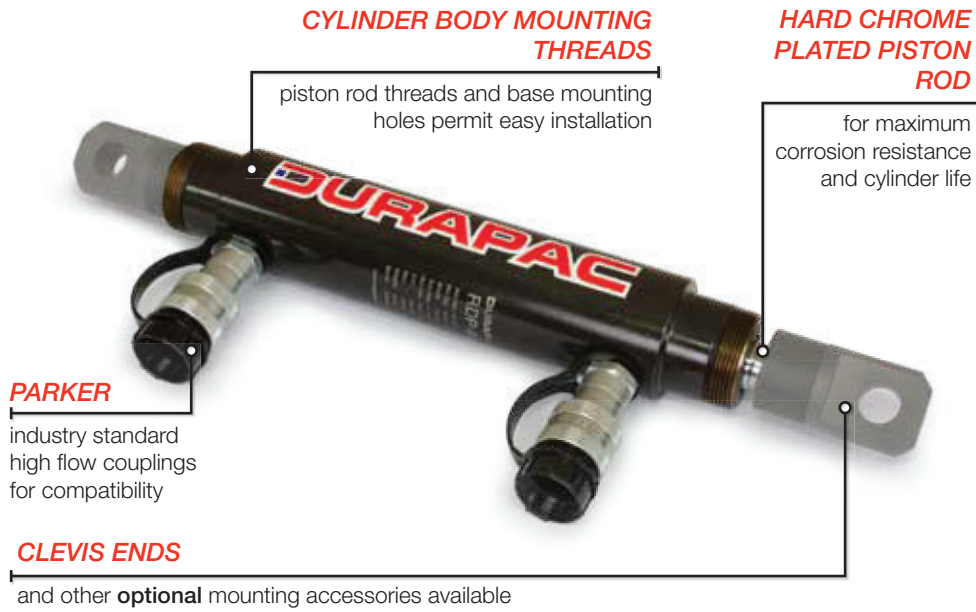
THE **RDP-SERIES** IS A HIGH PRECISION DOUBLE ACTING CYLINDER FOR USE IN APPLICATIONS WHERE ITS UNIQUE MOUNTING CONFIGURATIONS SIMPLIFY INSTALLATION. IT IS THE PERFECT CHOICE FOR PRODUCTION APPLICATIONS DUE TO THEIR HIGH-CYCLE PERFORMANCE.

All RDP-Series cylinders feature a hard chrome piston rod for maximum resistance to corrosion and wear. All models include collar thread, piston rod threads and base mounting holes. Optional mounting accessories including clevis ends are available.



Model Number	Cylinder Capacity			Stroke (in)	Cylinder Effective Area		Oil Capacity		A Collapsed Height (in)	B Extended Height (in)	C Body Length (in)	D Outside Diameter (in)	E Cylinder Bore Diameter (in)	F Piston Rod Diameter (in)
	ton*	Advance ton* / max.	Retract ton* / max.		Advance (in <sup>2</sup> )	Retract (in <sup>2</sup> )	Advance (in <sup>3</sup> )	Retract (in <sup>3</sup> )						
RDP-41	4	4.0	2.0	1.13	0.79	0.34	0.88	0.39	7.31	8.44	6.38	2.00	1.00	0.75
RDP-43		4.0	2.0	3.13	0.79	0.34	2.45	1.07	9.31	12.44	8.38	2.00	1.00	0.75
RDP-46		4.0	2.0	6.13	0.79	0.34	4.81	2.10	12.31	18.44	11.38	2.00	1.00	0.75
RDP-91	9	9.0	5.0	1.13	1.77	0.98	1.99	1.10	8.75	9.88	7.80	2.50	1.50	1.00
RDP-93		9.0	5.0	3.13	1.77	0.98	5.52	3.07	10.78	13.91	9.80	2.50	1.50	1.00
RDP-96		9.0	5.0	6.13	1.77	0.98	10.82	6.01	13.78	19.91	12.80	2.50	1.50	1.00
RDP-910		9.0	5.0	10.13	1.77	0.98	17.89	9.94	17.78	27.91	16.81	2.50	1.50	1.00
RDP-166	16	16.0	8.0	6.25	3.14	1.66	19.63	10.35	15.31	21.56	14.13	3.00	2.00	1.38
RDP-1610		16.0	8.0	10.25	3.14	1.66	32.20	16.98	19.31	29.56	18.11	3.00	2.00	1.38
RDP-256	25	25.0	11.0	6.25	4.91	2.15	30.68	13.42	16.69	22.94	15.63	3.63	2.50	1.88
RDP-2510		25.0	11.0	10.25	4.91	2.15	50.31	22.01	20.69	30.94	19.61	3.63	2.50	1.88

\*Nominal Cylinder Capacity in ton - see max. values for actual capacity



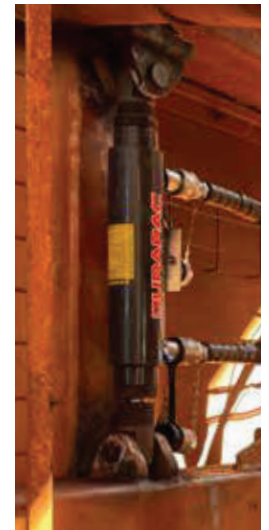
**CAPACITY RANGE**  
**4 - 25 ton**

**STROKE RANGE**  
**1.13 - 10.25 in**

**MAXIMUM OPERATING PRESSURE**  
**10,150 psi**

**i**

**Durapac** offer a range of clevis eye, retaining nut & foot or flange mounting attachments to suit the **RDP-Series** cylinders. Refer to Cylinder Accessories for more details

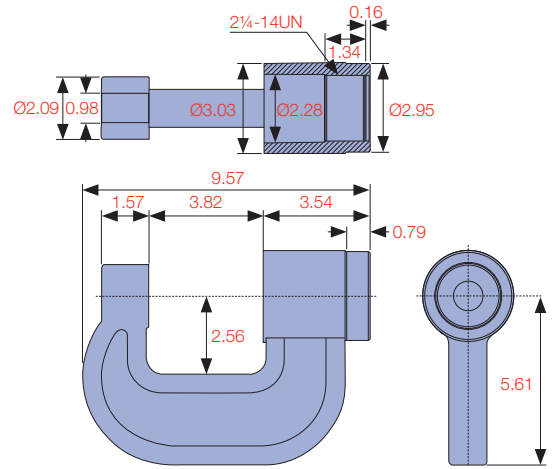


H Top to Return Port (in)	I Base to Advance Port (in)	K Piston Rod Protrusion (in)	L Clevis Eye Mounting Dim. (in)	L1 Clevis Eye Mounting Dim. (in)	M Clevis Eye Mounting Dim. (in)	N Neck Length (in)	P Piston Rod Thread Length (in)	Q Piston Rod Extension Thread	W Collar Thread	X Collar Thread Length (in)	Z Internal Base Thread	Z1 Internal Base Thread Length (in)	Weight (lbs)
1.88	1.88	0.94	10.12	11.25	1.61	1.13	0.75	1/2"-20	1-3/8"-12	0.44	1-1/8"-20	0.35	4.8
1.88	1.88	0.94	12.12	15.25	1.61	1.13	0.75	1/2"-20	1-3/8"-12	0.44	1-1/8"-20	0.35	6.4
1.88	1.88	0.94	15.12	21.25	1.61	1.13	0.75	1/2"-20	1-3/8"-12	0.44	1-1/8"-20	0.35	9.0
2.27	2.27	0.98	11.61	12.76	1.50	1.50	0.75	3/4"-16	2"-12	0.56	1-11/16"-18	0.55	9.0
2.27	2.27	0.98	13.66	16.79	1.50	1.50	0.75	3/4"-16	2"-12	0.56	1-11/16"-18	0.55	11.0
2.27	2.27	0.98	16.66	22.79	1.50	1.50	0.75	3/4"-16	2"-12	0.56	1-11/16"-18	0.55	14.0
2.27	2.27	0.98	20.66	30.79	1.50	1.50	0.75	3/4"-16	2"-12	0.56	1-11/16"-18	0.55	19.0
2.90	2.90	1.19	19.32	25.57	2.05	2.13	1.00	1-1/8"-12	2-5/8"-16	0.88	2-3/16"-16	0.94	22.0
2.90	2.90	1.19	23.32	33.57	2.05	2.13	1.00	1-1/8"-12	2-5/8"-16	0.88	2-3/16"-16	0.94	29.0
3.50	3.50	1.06	20.86	27.11	2.09	2.75	1.00	1-1/2"-12	3-1/4"-16	1.13	2-3/4"-16	1.02	36.0
3.50	3.50	1.08	24.86	35.11	2.09	2.75	1.00	1-1/2"-12	3-1/4"-16	1.13	2-3/4"-16	1.02	46.0

## CYLINDER ACCESSORIES

HYDRAULIC CYLINDERS

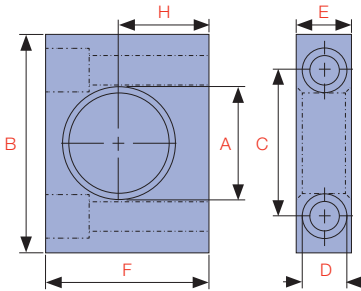
### DCC-10 CLAMP



Weight: 10.6 lbs (without cylinder)

DCC-10 CLAMP MAY BE USED WITH A RG-106 10 TON CYLINDER^

### FOOT MOUNTING FOR USE WITH RETAINING NUT

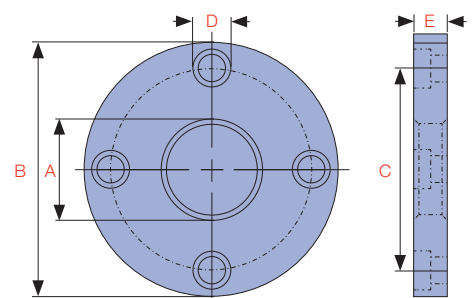


Model No.	Cylinder Capacity (ton)	Dimensions (in)							Suits Model
		A	B	C	D	E	F	H	
RAD-141	4	1.38	3.00	2.28	0.41	0.79	2.24	1.25	RDP 4 ton
RAD-171	9	2.00	4.00	3.07	0.53	0.98	3.25	1.75	RDP 9 ton
RAD-181	16	2.63	5.00	3.75	0.79	1.38	3.94	2.06	RDP 16 ton
RAD-191	25	3.25	6.25	4.63	1.04	1.77	4.92	2.50	RDP 25 ton



### FLANGE MOUNTING FOR USE WITH RETAINING NUT

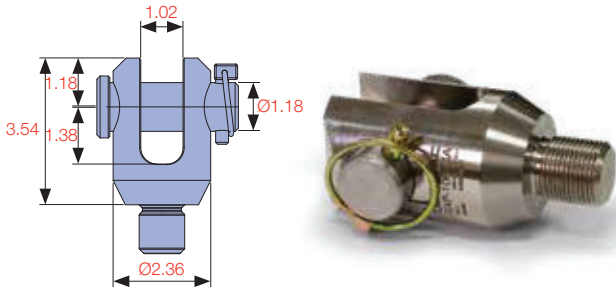
Model No.	Cylinder Capacity (ton)	Dimensions (in)					Suits Model
		A	B	C	D	E	
RAD-142	4	1.38	3.88	3.09	0.41	0.75	RDP 4 ton
RAD-172	9	2.00	4.75	3.88	0.41	1.00	RDP 9 ton
RAD-182	16	2.63	5.62	4.56	0.53	1.38	RDP 16 ton
RAD-192	25	3.25	6.50	5.34	0.66	1.75	RDP 25 ton



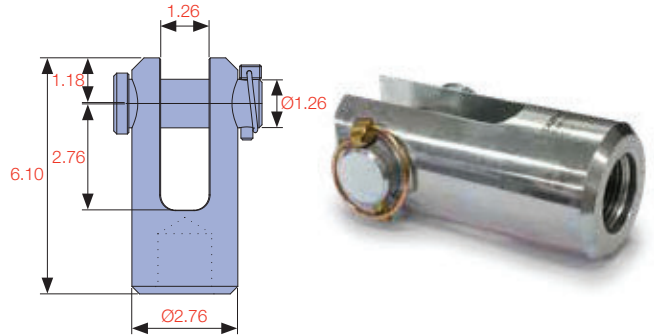
^ RG cylinder sold separately

**OPTIONAL CLEVIS ENDS**

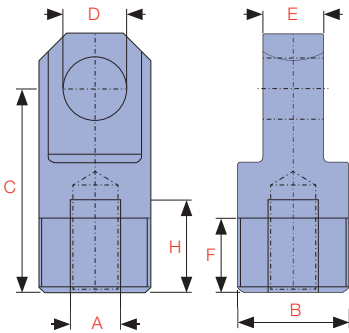
Note: 2 x Clevis and Pin Sets required per cylinder



RAP-106-CA suits RAP-106



RAP-206-FCA suits RAP-206



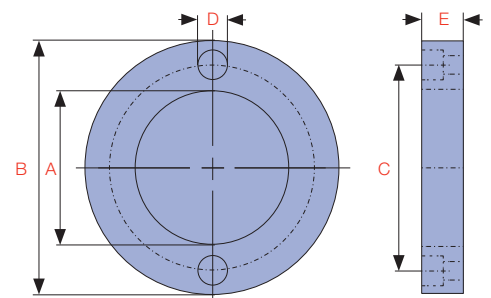
**CLEVIS EYE**

Model No.	Cylinder Capacity (ton)	Dimensions (in)							Suits Model
		A	B	C	D	E	F	H	
RAD-150**	4	1/2"-20	1-1/8"-20	2.06	0.63	0.63	0.75	0.94	RDP 4 ton
RAD-151**	9	3/4"-16	1-11/16"-18	2.25	0.79	1.00	1.00	0.94	RDP 9 ton
RAD-152**	16	1-1/8"-12	2-3/16"-16	3.06	0.98	1.25	1.00	1.19	RDP 16 ton
RAD-153**	25	1-1/2"-12	2-3/4"-16	3.06	1.26	1.50	1.00	1.06	RDP 25 ton



**RETAINING NUT**

Model No.	Cylinder Capacity (ton)	Dimensions (in)					Suits Model
		A	B	C	D	E	
RAD-143	4	1-3/8"-12	2.24	1.95	0.25	0.37	RDP 4 ton
RAD-173	9	2"-12	2.95	2.58	0.26	0.50	RDP 9 ton
RAD-183	16	2-5/8"-16	3.60	3.19	0.26	0.75	RDP 16 ton
RAD-193	25	3-1/4"-16	4.25	3.80	0.26	1.00	RDP 25 ton



\*\*See RDP-Series table for Clevis Eye Mounting Dimensions (L, L1 & M)