



THE **RG-SERIES** IS A GENERAL PURPOSE SPRING RETURN CYLINDER DESIGNED FOR USE IN PRODUCTION, MAINTENANCE, JACKING AND FABRICATION APPLICATIONS.

All RG-Series cylinders feature a hard chrome cylinder bore and piston rod for maximum corrosion resistance. When combined with bronze overlay on the piston bearing area and low friction surface treatment on the gland nut, this cylinder is suitable for demanding applications. Cylinder body mounting threads and base mounting holes are included on most models. Optional TSX tilt saddles are available for all models from RG-102 to RG-10010.



RG-10010

RG-1006

RG-5013

RG-102



### HARDENED GROOVED LOAD CAP

to prevent piston rod damage. Optional tilt saddles available

### GLAND NUT

with low friction coating withstands full dead end loading

### HARD CHROME PLATED PISTON ROD

for maximum corrosion resistance and cylinder life

### HARD CHROME PLATED BORE

for maximum corrosion resistance and cylinder life

### BRONZE OVERLAY

on piston bearing area reduces side load induced damage and extends cylinder life

### CYLINDER BODY MOUNTING THREADS

piston rod threads and base mounting holes permit easy fixture

### PISTON ROD WIPER

reduces contaminants

### RETURN SPRINGS

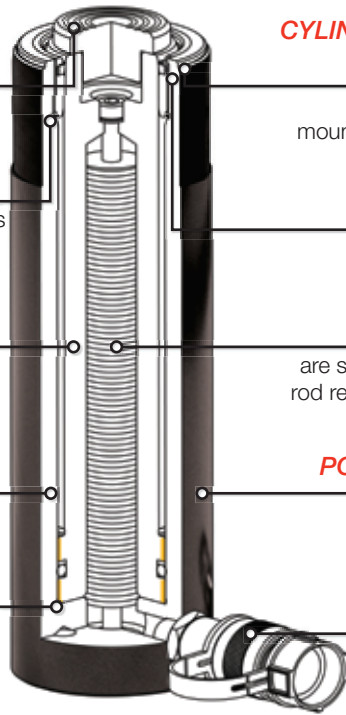
are sized to ensure efficient piston rod return and maximum spring life

### POWDER COATED FINISH

enhances appearance and reduces corrosion

### PARKER

industry standard high flow coupling for compatibility



CAPACITY RANGE

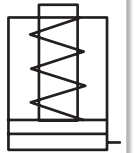
**5 - 100 ton**

STROKE RANGE

**0.63 - 14.25 in**

MAXIMUM OPERATING PRESSURE

**10,150 psi**



C

HYDRAULIC CYLINDERS

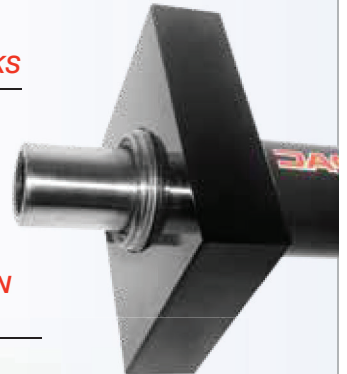


Durapac offer a range of piston and base attachments to suit the **RG-Series** cylinders. Refer to Cylinder Accessories for more details



26 POINT TANK JACKING SYSTEM

### MOUNTING BLOCKS



### BASE AND PISTON CLEAVISES

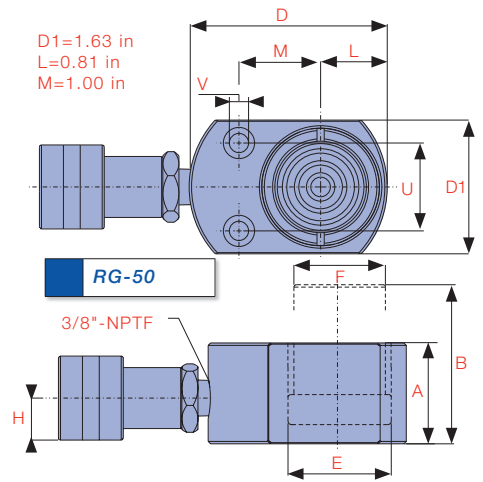
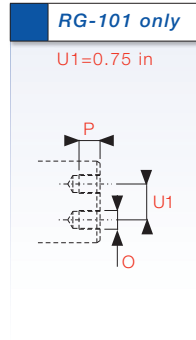
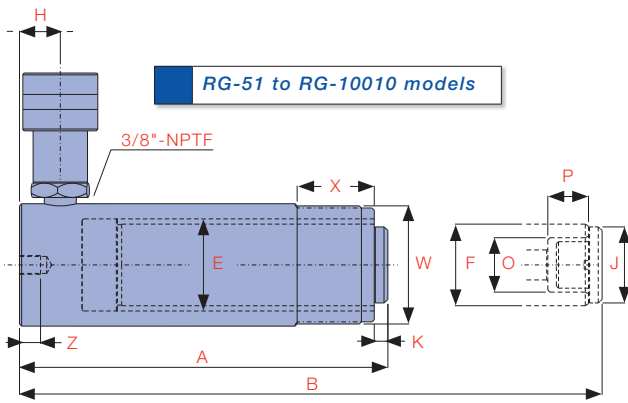


### JACKING BASES



## SINGLE ACTING COLLAR THREAD CYLINDERS

HYDRAULIC CYLINDERS



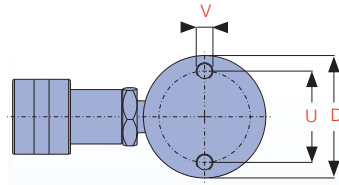
Model Number	Cylinder Capacity ton* / max.	Stroke (in)	Cylinder Effective Area (in <sup>2</sup> )	Oil Capacity (in <sup>3</sup> )	A Collapsed Height (in)	B Extended Height (in)	D Outside Diameter (in)	E Cylinder Bore Diameter (in)	F Piston Rod Diameter (in)	H Base to Advance Port (in)	J Standard Load Cap Diameter (in)	K Load Cap Protrusion from Piston Rod (in)	
RG-50	5	4.9	0.63	0.99	0.62	1.63	2.25	2.31	1.13	1.00	0.75	**	**
RG-51		4.9	1.00	0.99	0.99	4.34	5.34	1.50	1.13	1.00	0.75	1.00	0.25
RG-53		4.9	3.00	0.99	2.99	6.50	9.50	1.50	1.13	1.00	0.75	1.00	0.25
RG-55		4.9	5.00	0.99	5.00	8.50	13.50	1.50	1.13	1.00	0.75	1.00	0.25
RG-57		4.9	7.00	0.99	6.95	10.75	17.75	1.50	1.13	1.00	0.75	1.00	0.25
RG-59		4.9	9.13	0.99	9.15	12.75	21.88	1.50	1.13	1.00	0.75	1.00	0.25
RG-101	10	11.2	1.00	2.24	2.24	3.53	4.53	2.25	1.69	1.50	0.75	-	-
RG-102		11.2	2.13	2.24	4.76	4.78	6.91	2.25	1.69	1.50	0.75	1.38	0.25
RG-104		11.2	4.13	2.24	9.23	6.75	10.88	2.25	1.69	1.50	0.75	1.38	0.25
RG-106		11.2	6.13	2.24	13.70	9.75	15.88	2.25	1.69	1.50	0.75	1.38	0.25
RG-108		11.2	8.00	2.24	17.88	11.75	19.75	2.25	1.69	1.50	0.75	1.38	0.25
RG-1010		11.2	10.13	2.24	22.07	13.75	23.88	2.25	1.69	1.50	0.75	1.38	0.25
RG-1012		11.2	12.00	2.24	26.85	15.75	27.75	2.25	1.69	1.50	0.75	1.38	0.25
RG-1014		11.2	14.00	2.24	31.42	17.75	31.75	2.25	1.69	1.50	0.75	1.38	0.25
RG-151	15	15.7	1.00	3.14	3.14	4.88	5.88	2.75	2.00	1.63	0.75	1.50	0.38
RG-152		15.7	2.00	3.14	6.28	5.88	7.88	2.75	2.00	1.63	0.75	1.50	0.38
RG-154		15.7	4.00	3.14	12.57	7.88	11.88	2.75	2.00	1.63	0.75	1.50	0.38
RG-156		15.7	6.00	3.14	18.85	10.69	16.69	2.75	2.00	1.63	1.00	1.50	0.38
RG-158		15.7	8.00	3.14	25.13	12.69	20.69	2.75	2.00	1.63	1.00	1.50	0.38
RG-1510		15.7	10.00	3.14	31.42	14.69	24.69	2.75	2.00	1.63	1.00	1.50	0.38
RG-1512		15.7	12.00	3.14	37.71	16.69	28.69	2.75	2.00	1.63	1.00	1.50	0.38
RG-1514		15.7	14.00	3.14	43.99	18.69	32.69	2.75	2.00	1.63	1.00	1.50	0.38
RG-251	25	25.8	1.00	5.16	5.16	5.50	6.50	3.38	2.56	2.25	1.00	2.00	0.41
RG-252		25.8	2.00	5.16	10.32	6.50	8.50	3.38	2.56	2.25	1.00	2.00	0.41
RG-254		25.8	4.00	5.16	20.64	8.50	12.50	3.38	2.56	2.25	1.00	2.00	0.41
RG-256		25.8	6.25	5.16	31.97	10.75	17.00	3.38	2.56	2.25	1.00	2.00	0.41
RG-258		25.8	8.25	5.16	42.56	12.75	21.00	3.38	2.56	2.25	1.00	2.00	0.41
RG-2510		25.8	10.25	5.16	52.84	14.75	25.00	3.38	2.56	2.25	1.00	2.00	0.41
RG-2512		25.8	12.25	5.16	62.97	16.75	29.00	3.38	2.56	2.25	1.00	2.00	0.41
RG-2514		25.8	14.25	5.16	73.53	18.75	33.00	3.38	2.56	2.25	1.00	2.00	0.41
RG-308	30	32.6	8.25	6.52	53.57	15.25	23.50	4.00	2.88	2.25	2.24	2.00	0.41
RG-502	50	55.2	2.00	11.04	22.15	6.94	8.94	5.00	3.75	3.13	1.31	2.81	0.11
RG-504		55.2	4.00	11.04	44.18	8.94	12.94	5.00	3.75	3.13	1.31	2.81	0.11
RG-506†		55.2	6.25	11.04	69.07	11.13	17.38	5.00	3.75	3.13	1.38	2.81	0.11
RG-5013		55.2	13.25	11.04	146.45	18.13	31.38	5.00	3.75	3.13	1.38	2.81	0.11
RG-756	75	79.5	6.13	15.90	97.63	11.25	17.38	5.75	4.50	3.75	1.19	2.81	0.19
RG-7513		79.5	13.13	15.90	208.39	19.38	32.51	5.75	4.50	3.75	1.19	2.81	0.19
RG-1004	100	103.1	4.00	20.63	82.62	8.07	12.04	7.00	5.13	4.13	1.19	2.81	0.11
RG-1006		103.1	6.63	20.63	136.77	14.06	20.69	7.00	5.13	4.13	1.63	2.81	0.11
RG-1008		103.1	8.00	20.63	165.25	14.06	22.04	7.00	5.13	4.13	1.63	2.81	0.11
RG-10010		103.1	10.25	20.63	211.44	17.69	27.94	7.00	5.13	4.13	1.63	2.81	0.11

\* Nominal Cylinder Capacity in ton – see max. values for actual capacity

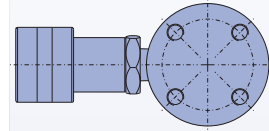
\*\* RG-50 Cylinder has non-removable grooved load cap and no collar thread

† RG-506 cylinder will not fit into jacking base without welded handle being removed

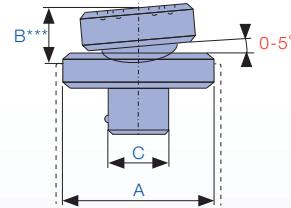
## SINGLE ACTING COLLAR THREAD CYLINDERS



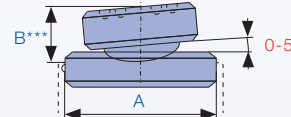
RG-51 to RG-5013 models



RG-1006 and RG-10010 models



TSX-10, 50



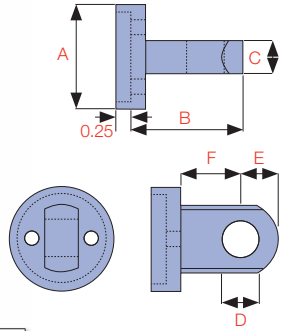
TSX-100

O Piston Rod Internal Thread	P Piston Rod Thread Length (in)	Base Mounting Holes			W Collar Thread	X Collar Thread Length (in)	Weight (lbs)	Optional Tilt Saddle				Model Number	Handle Type
		U Bolt Circle Diameter (in)	V Thread	Z Thread Depth (in)				Model Number	A (in)	B*** (in)	C (in)		
**	**	1.10	0.22" HOLE	-	-	-	2.20	-	-	-	-	RG-50	-
3/4"-16UNF	0.56	0.98	1/4"-20UNC	0.56	1-1/2"-16UN	1.13	2.30	-	-	-	-	RG-51	-
3/4"-16UNF	0.56	0.98	1/4"-20UNC	0.56	1-1/2"-16UN	1.13	3.30	-	-	-	-	RG-53	-
3/4"-16UNF	0.56	0.98	1/4"-20UNC	0.56	1-1/2"-16UN	1.13	4.10	-	-	-	-	RG-55	-
3/4"-16UNF	0.63	0.98	1/4"-20UNC	0.56	1-1/2"-16UN	1.13	5.30	-	-	-	-	RG-57	-
3/4"-16UNF	0.63	0.98	1/4"-20UNC	0.56	1-1/2"-16UN	1.13	6.10	-	-	-	-	RG-59	-
#10-24UNC	0.25	1.54	5/16"-18UNC	0.50	2-1/4"-14UN	1.02	4.00	-	-	-	-	RG-101	-
1"-8UNC	0.75	1.54	5/16"-18UNC	0.50	2-1/4"-14UN	1.02	5.10	TSX-10	1.38	0.79	0.87	RG-102	-
1"-8UNC	0.75	1.54	5/16"-18UNC	0.50	2-1/4"-14UN	1.02	7.20	TSX-10	1.38	0.79	0.87	RG-104	-
1"-8UNC	0.75	1.54	5/16"-18UNC	0.50	2-1/4"-14UN	1.02	9.80	TSX-10	1.38	0.79	0.87	RG-106	-
1"-8UNC	0.75	1.54	5/16"-18UNC	0.50	2-1/4"-14UN	1.02	12.00	TSX-10	1.38	0.79	0.87	RG-108	-
1"-8UNC	0.75	1.54	5/16"-18UNC	0.50	2-1/4"-14UN	1.02	14.00	TSX-10	1.38	0.79	0.87	RG-1010	-
1"-8UNC	0.75	1.54	5/16"-18UNC	0.50	2-1/4"-14UN	1.02	15.00	TSX-10	1.38	0.79	0.87	RG-1012	-
1"-8UNC	0.75	1.54	5/16"-18UNC	0.50	2-1/4"-14UN	1.02	18.00	TSX-10	1.38	0.79	0.87	RG-1014	-
1"-8UNC	1.00	1.85	3/8"-16UNC	0.50	2-3/4"-16UN	1.19	7.20	TSX-10	1.38	0.79	0.87	RG-151	-
1"-8UNC	1.00	1.85	3/8"-16UNC	0.50	2-3/4"-16UN	1.19	9.00	TSX-10	1.38	0.79	0.87	RG-152	-
1"-8UNC	1.00	1.85	3/8"-16UNC	0.50	2-3/4"-16UN	1.19	11.00	TSX-10	1.38	0.79	0.87	RG-154	-
1"-8UNC	1.00	1.85	3/8"-16UNC	0.50	2-3/4"-16UN	1.19	15.00	TSX-10	1.38	0.79	0.87	RG-156	-
1"-8UNC	1.00	1.85	3/8"-16UNC	0.50	2-3/4"-16UN	1.19	18.00	TSX-10	1.38	0.79	0.87	RG-158	-
1"-8UNC	1.00	1.85	3/8"-16UNC	0.50	2-3/4"-16UN	1.19	21.00	TSX-10	1.38	0.79	0.87	RG-1510	-
1"-8UNC	1.00	1.85	3/8"-16UNC	0.50	2-3/4"-16UN	1.19	24.00	TSX-10	1.38	0.79	0.87	RG-1512	-
1"-8UNC	1.00	1.85	3/8"-16UNC	0.50	2-3/4"-16UN	1.19	26.00	TSX-10	1.38	0.79	0.87	RG-1514	-
1-1/2"-16UN	1.00	2.28	1/2"-13UNC	0.75	3-5/16"-12UN	1.94	13.00	TSX-50	1.97	0.83	1.42	RG-251	-
1-1/2"-16UN	1.00	2.28	1/2"-13UNC	0.75	3-5/16"-12UN	1.94	14.00	TSX-50	1.97	0.83	1.42	RG-252	-
1-1/2"-16UN	1.00	2.28	1/2"-13UNC	0.75	3-5/16"-12UN	1.94	18.00	TSX-50	1.97	0.83	1.42	RG-254	-
1-1/2"-16UN	1.00	2.28	1/2"-13UNC	0.75	3-5/16"-12UN	1.94	22.00	TSX-50	1.97	0.83	1.42	RG-256	-
1-1/2"-16UN	1.00	2.28	1/2"-13UNC	0.75	3-5/16"-12UN	1.94	27.00	TSX-50	1.97	0.83	1.42	RG-258	-
1-1/2"-16UN	1.00	2.28	1/2"-13UNC	0.75	3-5/16"-12UN	1.94	31.00	TSX-50	1.97	0.83	1.42	RG-2510	-
1-1/2"-16UN	1.00	2.28	1/2"-13UNC	0.75	3-5/16"-12UN	1.94	36.00	TSX-50	1.97	0.83	1.42	RG-2512	-
1-1/2"-16UN	1.00	2.28	1/2"-13UNC	0.75	3-5/16"-12UN	1.94	39.00	TSX-50	1.97	0.83	1.42	RG-2514	-
1-1/2"-16UN	1.00	-	-	-	3-5/16"-12UN	1.94	40.00	TSX-50	1.97	0.83	1.42	RG-308	-
-	-	3.74	1/2"-13UNC	0.75	5"-12UN	2.19	33.00	TSX-100	2.80	0.98	-	RG-502	-
-	-	3.74	1/2"-13UNC	0.75	5"-12UN	2.19	42.00	TSX-100	2.80	0.98	-	RG-504	♠
-	-	3.74	1/2"-13UNC	0.75	5"-12UN	2.19	51.00	TSX-100	2.80	0.98	-	RG-506	♣
-	-	3.74	1/2"-13UNC	0.75	5"-12UN	2.19	83.00	TSX-100	2.80	0.98	-	RG-5013	♦
-	-	-	-	-	5-3/4"-12UN	1.75	65.00	TSX-100	2.80	0.98	-	RG-756	◆
-	-	-	-	-	5-3/4"-12UN	1.75	130.00	TSX-100	2.80	0.98	-	RG-7513	◆
-	-	-	-	-	6-7/8"-12UN	1.75	69.00	TSX-100	2.80	0.98	-	RG-1004	♣
-	-	5.47	3/4"-10UNC	1.00	6-7/8"-12UN	1.75	130.00	TSX-100	2.80	0.98	-	RG-1006	◆
-	-	5.47	3/4"-10UNC	1.00	6-7/8"-12UN	1.75	135.00	TSX-100	2.80	0.98	-	RG-1008	◆
-	-	5.47	3/4"-10UNC	1.00	6-7/8"-12UN	1.75	160.00	TSX-100	2.80	0.98	-	RG-10010	◆

HANDLE TYPES: ♠ WELDED ◆ EYEBOLT ♣ THREAD

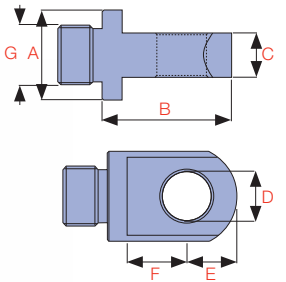
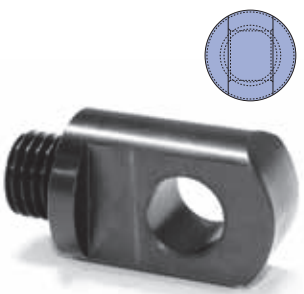
\*\*\* Total cylinder collapsed height with optional tilt load cap equals (dim. A - dim. K + dim. B)

**BASE CLEEVES**



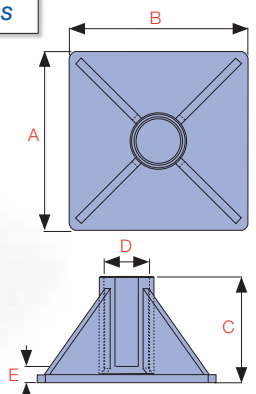
Model No.	Cylinder Capacity (ton)	Dimensions (mm)						Suits Models
		A	B	C	D	E	F	
CBC-5	5	44	47	14	16	16	25	RG 5 ton
CBC-10	10	63	66	25	22	25	35	RG 10 ton
CBC-15	15	76	66	25	22	25	35	RG 15 ton
CBC-25	25	95	79	38	31	31	41	RG 25 ton

**PISTON ROD CLEEVES**



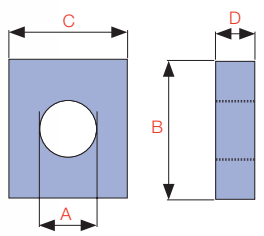
Model No.	Cylinder Capacity (ton)	Dimensions (mm)							Suits Models
		A	B	C	D	E	F	G	
CPC-5	5	28	41	14	16	16	19	3/4"-16UNF	RG 5 ton
CPC-1015	10/15	42	61	25	22	25	28	1"-8UNC	RG 10/15 ton
CPC-25	25	57	74	38	31	31	35	1 1/2"-16UN	RG 25 ton

**CYLINDER JACKING BASES**



Model No.	Cylinder Capacity (ton)	Dimensions (mm)					Suits Models
		A	B	C	D	E	
CB-10	10	228	228	135	58	20	RG 10 ton
CB-25	25	279	279	140	86	26	RG 25 ton
CB-50	50	300	300	100	130	41	RG 50 ton
CB-50A	50	300	300	100	128	41	RSLC 50 ton

**MOUNTING BLOCKS**



Model No.	Cylinder Capacity (ton)	Dimensions (mm)				Suits Models
		A	B	C	D	
CMB-5	5	1 1/2"-16UN	88	76	25	RG 5 ton
CMB-10	10	2 1/4"-14UN	114	88	25	RG 10 ton
CMB-15	15	2 3/4"-16UN	101	114	38	RG 15 ton
CMB-25	25	3 5/16"-12UN	127	165	50	RG 25 ton

**BASE ATTACHMENT**

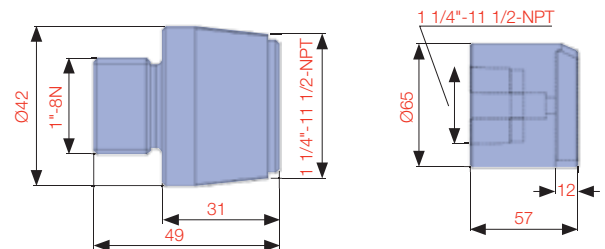


ZAM1245

**THREAD ADAPTOR**



ZAM1246



ZAM1245 and ZAM1246 allow Durapac RG 10 ton series cylinders (excluding RG-101) to be used with CRK-10 attachments.