

## DOUBLE ACTING HOLLOW PISTON CYLINDERS

C

HYDRAULIC CYLINDERS



RHD-2006-128

**EXCEEDS**  
ANSI/ASME B30.1  
**SAFETY**  
STANDARDS

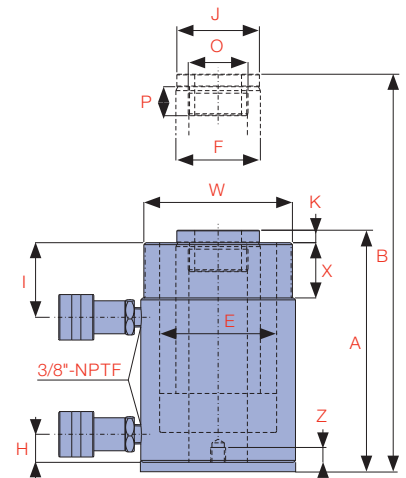
RHD-1003

THE **RHD-SERIES** IS A DOUBLE ACTING HOLLOW PISTON ROD CYLINDER.

The hollow piston allows for a rod or cable to be inserted through the entire body length, while the double acting design improves speed of operation when longer stroke cylinders are required. They can be used in tensioning, load testing, bush extracting, and maintenance applications. All cylinders in this range have base mounting holes.



Consult Durapac for cylinders with custom tonnage and/or stroke



Model Number	Cylinder Capacity			Stroke (in)	Cylinder Effective Area		Oil Capacity		A Collapsed Height (in)	B Extended Height (in)	D Outside Diameter (in)	E Cylinder Bore Diameter (in)
	ton*	Advance ton* / max.	Retract ton* / max.		Advance (in <sup>2</sup> )	Retract (in <sup>2</sup> )	Advance (in <sup>3</sup> )	Retract (in <sup>3</sup> )				
RHD-307	30	36.0	24.0	7.00	7.22	4.71	50.65	33.01	13.39	20.39	4.50	3.50
RHD-3010		36.0	24.0	10.13	7.22	4.71	73.41	47.84	17.36	27.52	4.50	3.50
RHD-603	60	64.0	42.0	3.70	12.73	8.33	44.67	29.23	10.20	13.70	6.25	4.88
RHD-606		64.0	42.0	6.50	12.73	8.33	83.36	54.49	13.19	19.72	6.25	4.88
RHD-6010		64.0	42.0	10.12	12.73	8.33	129.07	84.34	17.72	27.83	6.25	4.88
RHD-1001	100	103.0	68.0	1.50	20.63	13.54	30.88	20.26	7.13	8.62	8.38	6.50
RHD-1003		103.0	68.0	3.00	20.63	13.54	61.76	40.52	10.63	13.62	8.38	6.50
RHD-1006		103.0	68.0	6.00	20.63	13.54	124.31	81.59	14.09	20.12	8.38	6.50
RHD-10010		103.0	68.0	10.13	20.63	13.54	208.76	137.00	18.74	28.86	8.38	6.50
RHD-1508	150	158.0	80.0	8.00	31.62	15.91	252.76	127.05	14.37	22.36	9.75	7.50
RHD-2006-128	200	227.0	100.0	6.00	44.90	19.80	265.15	116.92	15.63	21.54	12.80	9.84
RHD-3006	300	337.0	151.0	6.00	66.52	29.80	392.87	176.05	14.45	19.72	13.78	10.63

\* Nominal Cylinder Capacity in ton - see max. values for actual capacity

### SAFETY PRESSURE

relief valve protects cylinder from intensification due to checked hydraulic return coupling

### GLAND NUT

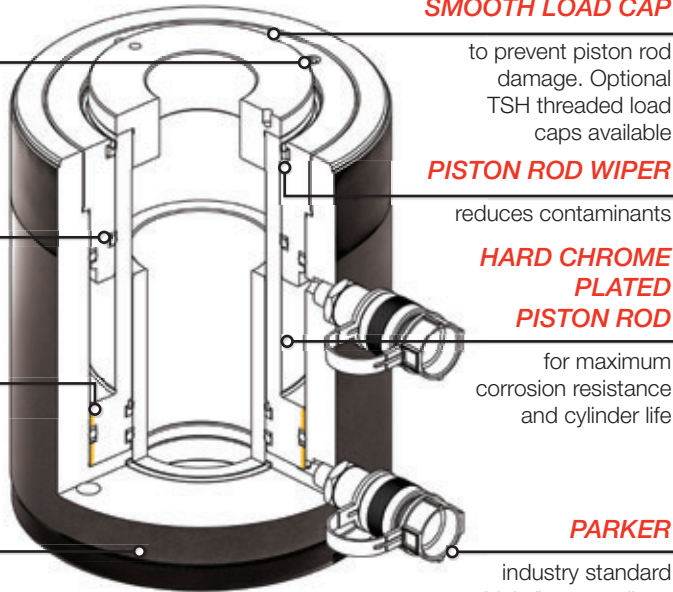
with low friction coating withstands full dead end loading

### BRONZE OVERLAY

on piston bearing area reduces side load induced damage and extends cylinder life

### STEEL BASE PLATE

protects base and is removable to allow use of threaded mounting holes



### THREADED FIT SMOOTH LOAD CAP

to prevent piston rod damage. Optional TSH threaded load caps available

### PISTON ROD WIPER

reduces contaminants

### HARD CHROME PLATED PISTON ROD

for maximum corrosion resistance and cylinder life

### PARKER

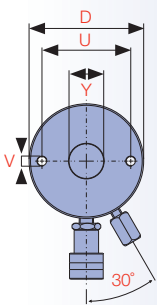
industry standard high flow couplings for compatibility

**CAPACITY RANGE**  
**30 - 300 ton**

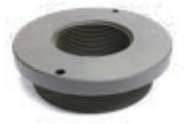
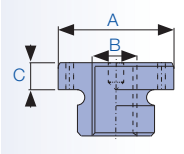
**STROKE RANGE**  
**1.50 - 10.13 in**

**MAXIMUM OPERATING PRESSURE**  
**10,150 psi**

**C**  
**HYDRAULIC CYLINDERS**



Base Mounting Holes			Model Number	Optional Threaded Load Caps			Handle Type	
U Bolt Circle Diameter (in)	V Thread	Z Thread Depth (in)		Model Number	A (in)	B (in)		C (in)
3.63	3/8"-16UNC	0.62	RHD-307	TSH-30	2.49	1-1/4"-7UNC	0.38	♥
3.63	3/8"-16UNC	0.62	RHD-3010	TSH-30	2.49	1-1/4"-7UNC	0.38	♥
5.12	1/2"-13UNC	0.55	RHD-603	TSH-60	3.61	1-5/8"-5-1/2UN	0.50	♥
5.12	1/2"-13UNC	0.55	RHD-606	TSH-60	3.61	1-5/8"-5-1/2UN	0.50	♥
5.12	1/2"-13UNC	0.55	RHD-6010	TSH-60	3.61	1-5/8"-5-1/2UN	0.50	♥
7.00	5/8"-11UNC	0.75	RHD-1001	TSH-100	4.97	2-1/2"-8UN	0.51	♥
7.00	5/8"-11UNC	0.75	RHD-1003	TSH-100	4.97	2-1/2"-8UN	0.51	♥
7.00	5/8"-11UNC	0.75	RHD-1006	TSH-100	4.97	2-1/2"-8UN	0.51	♥
7.00	5/8"-11UNC	0.75	RHD-10010	TSH-100	4.97	2-1/2"-8UN	0.51	♥
8.43	5/8"-11UNC	0.59	RHD-1508	TSH-150	-	-	-	-
10.24	5/8"-11UNC	1.34	RHD-2006-128	TSH-200	-	-	-	-
10.24	5/8"-11UNC	1.26	RHD-3006	TSH-300	-	-	-	-



F Piston Rod Diameter (in)	H Base to Advance Port (in)	I Top to Return Port (in)	J Standard Load Cap Diameter (in)	K Load Cap Protrusion from Piston Rod (in)	O Piston Rod Internal Thread	P Piston Rod Thread Length (in)	W Collar Thread	X Collar Thread Length (in)	Y Center Hole Diameter (in)	Weight (lbs)	Model Number
2.50	1.00	2.38	2.50	0.38	1-13/16"-16UN	0.88	4-1/2"-12UN	1.66	1.31	48.0	RHD-307
2.50	1.00	2.38	2.50	0.38	1-13/16"-16UN	0.88	4-1/2"-12UN	1.66	1.31	60.0	RHD-3010
3.63	1.25	2.63	3.61	0.50	2-3/4"-16UN	0.75	6-1/4"-12UN	1.91	2.13	62.0	RHD-603
3.63	1.25	2.63	3.61	0.50	2-3/4"-16UN	0.75	6-1/4"-12UN	1.91	2.13	78.0	RHD-606
3.63	1.25	2.63	3.61	0.50	2-3/4"-16UN	0.75	6-1/4"-12UN	1.91	2.13	101.0	RHD-6010
5.00	1.50	1.75	4.97	0.50	4"-16UN	1.00	-	-	3.13	85.0	RHD-1001
5.00	1.50	3.38	4.97	0.50	4"-16UN	1.00	8-3/8"-12UN	2.38	3.13	135.0	RHD-1003
5.00	1.50	3.38	4.97	0.50	4"-16UN	1.00	8-3/8"-12UN	2.38	3.13	175.0	RHD-1006
5.00	1.50	3.38	4.97	0.50	4"-16UN	1.00	8-3/8"-12UN	2.38	3.13	235.0	RHD-10010
6.00	1.50	2.38	5.00	0.19	4-1/4"-12UN	1.00	-	-	3.13	245.0	RHD-1508
8.46	2.87	3.54	8.46	1.22	M168 x 2.5	1.73	-	-	5.04	408.0	RHD-2006-128
8.66	2.20	3.15	8.66	1.22	M145 x 2.5	1.38	-	-	4.57	463.0	RHD-3006

HANDLE TYPES: ♦ EYEBOLT ♥ REMOVABLE STRAP HANDLE